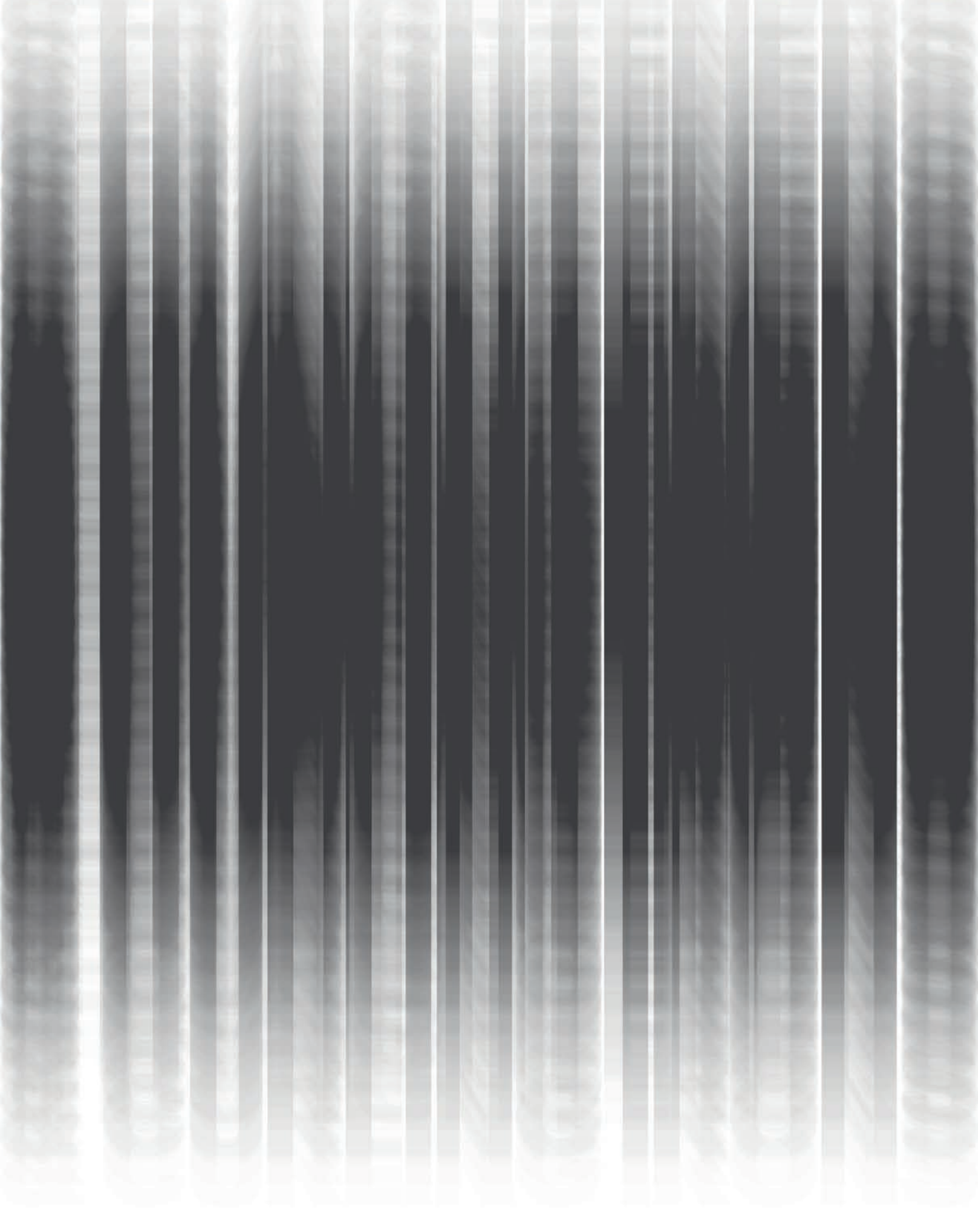


STRAIGHTENERS & CURLING IRONS





PERFECTION STRAIGHTENER

- 25mm ceramic plates.
- Ion generator & infrared ray emitting technology on plates seal in natural oils.
- PTC heater.
- Dual voltage for worldwide use.
- Variable temperature control between 130, 150, 170, 190 & 210°C.
- Includes a dedicated optimum temperature button that sets temperature to 185°C, the recommended temperature for most hair types & styling needs.
- Fast heat-up time of 30 seconds to maximum temperature.
- Automatic shut-off after 30 minutes without use.
- 3 meter cord with 360 degree swivel for tangle free styling.

18284



FASTLANE 2.0 STRAIGHTENER

- Soft touch housing.
- 25mm gold ceramic plates.
- Dual voltage for worldwide use.
- PTC heater.
- Digital variable temperature control from 80 - 230°C.
- Fast heat-up time.
- Automatic shut-off after one hour without use.

18126



WHITE HEAT GOLD SOFT TOUCH STRAIGHTENER

- Tames unruly, thick or coarse hair.
- Ideal for styling the most unmanageable hair.
- Gold plate coating for sleek, shiny & silky hair.
- Friction free titanium floating plates with beveled edges for maximum coverage per pass.
- Titanium plates generate high levels of negative ions.
- Adjustable temperature control from 130-230°C.
- Straightener controls on inside of handle - can't be accidentally changed.
- Advanced surround heat for faster curls, flick & waves.
- Enhanced ionic technology seals in natural oils.
- Ideal for use with permanent & keratin straightening systems.
- Fast heat-up & heat recovery.
- Dual voltage for worldwide use.
- Automatic shut-off after one hour without use.
- 3 meter cord with 360 degree swivel for tangle free styling.

38mm
18128

25mm
18127

WHITE HEAT SOFT TOUCH STRAIGHTENER

- Titanium plates generate high levels of negative ions.
- Imparts shine & makes hair more manageable.
- Floating plates with beveled edges allow for a wide range of styling & straightening options through maximum hair coverage per pass.
- Digital variable temperature control from 130-230°C.
- Enhanced ionic technology seals in natural oils.
- Fast heat-up & heat recovery.
- Dual voltage for worldwide use.
- Automatic shut-off after one hour without use.
- 3 meter cord with 360 degree swivel for tangle free styling.



25mm
12452

38mm
12450

LIGHTNING STRAIGHTENER

- Incorporates latest MCH (Metal Ceramic Heater) rapid heater technology.
- 25mm titanium plates with variable heat-up to 230°C.
- Consistent heat across the whole plate.
- Suitable for all styling needs.
- Imparts shine & makes hair more manageable.
- Floating plates with beveled edges allow for a wide range of styling & straightening options through maximum hair coverage per pass.
- Manufactured for silkier, shinier, glossy & healthy hair.
- New titanium plate technology limits potential heat damage as much as possible.
- Fast heat-up & heat recovery.
- Automatic shut-off after one hour without use.
- Works perfectly with any complementary straightening products.
- 3 meter cord with 360 degree swivel for tangle-free styling.

9046





SMOOTHE ME STRAIGHTENER

- 25mm ceramic plates.
- Pre-setting for fine, medium & coarse hair types.
- Intuitive touch control 80-230°C.
- Dual voltage for worldwide use.
- Soft touch housing.
- Fast heat recovery.
- Automatic shut-off after one hour without use.
- Temperature lock.
- 3 meter cord with 360 degree swivel for tangle-free styling.

14492



SLEEK HEAT STRAIGHTENER

- 25mm ceramic plates.
- Sophisticated rose gold finish.
- Swipe temperature control panel ranging from 110-230°C.
- Slim housing for curls & flicks.
- Dual voltage for worldwide use.
- Fast heat-up & heat recovery technology.
- Automatic shut-off after one hour without use.
- 3 meter cord with 360 degree swivel for tangle-free styling.

15589



GLIDE STRAIGHTENER

- 25mm ceramic plates.
- LCD display combined with LED visual temperature level display, ranging from 180-230°C.
- Super-fast heat-up time.
- Power off memory function.
- Ion generator which smooths the cuticle of the hair.
- Dual voltage for worldwide use.
- Results in smooth, shiny hair.
- Soft touch housing.
- 3 meter cord with 360 degree swivel for tangle-free styling.

15973



SPIKE MINI STRAIGHTENER

- Narrow 13mm ceramic plates.
- Perfect for short hair & fringes.
- 3 heat settings: 165, 185 & 210°C.
- Ion generator with blue LED light indicator.
- Fast 30 second heat-up time to max temperature.
- Dual voltage for worldwide use.
- PTC heater.
- Automatic shut-off after one hour without use.
- 360 degree swivel power cord.

18548





BRASIL CACAU

PROFESSIONAL

BRASIL CACAU ACCELERATOR PRO+

- High performance 38mm wide x 127mm long titanium plates are ideal for coarse, thick hair & fast styling.
- Floating plates ensure perfect contact with the hair with every pass for quicker styling & less damage.
- Beveled edge plate design for snag-free & pain-free styling.
- Quick 30-40 second heat-up time.
- LCD digital temperature control from 80-230°C for versatile styling options.
- Dual voltage for worldwide use.
- Temperature lock function for safe & consistent styling, with no heat dips during use.
- 3 meter cord with 360 degree swivel action for maximum maneuverability.
- Automatic shut-off after one hour without use.
- Specially designed to perfectly complement other Brasil Cacau products.
- Made in Brazil with the highest professional quality standards in mind.

16362

BRASIL CACAU

PROFESSIONAL

BRASIL CACAU ACCELERATOR

- High performance titanium plates that generate high levels of negative ions & infrared heat.
- 32.4mm plate width for all hair types.
- Hair is left silky smooth, frizz-free & free from heat damage.
- Enhanced ionic technology seals in natural oils.
- Floating plates with beveled edges for all styling & straightening applications.
- Newest heat technology makes heat-up recovery time twice as fast.
- LCD digital temperature control from 80-230°C.
- 3 meter swivel cord with 360 degree swivel action.
- Automatic shut-off after one hour without use.

9047



BRASILIAN HAIR SEDUCTION IRON

- Durable 25mm titanium plate which generates high levels of negative ions & infrared heat.
- Digital variable heat control from 110-230°C.
- Hair is left silky smooth, frizz-free & free from heat damage.
- Enhanced ionic technology seals in natural oils.
- Floating plates with beveled edges for all styling & straightening applications.
- Fast heat-up & recovery.
- Dual voltage for worldwide use.
- Automatic shut-off after one hour without use.
- 3 meter swivel cord with 360 degree swivel action.

13356

HairPRO 25MM ULTRASONIC/INFRARED HAIR CARE IRON

These latest generation heaters provide a maximum temperature of 210 °C, ultra-rapid heat-up times, consistent heat across the whole plate, damp to dry styling, ultra-rapid heat recovery & improved reliability. Tourmaline is nature's most effective ion generator, making hair silkier & shinier. Ionic care for glossy & healthy hair.

This unique iron combines ultrasonic technology with infrared rays, allowing water, proteins & other nourishment substances found in repair treatments to be vaporized into gaseous, microscopic particles that easily penetrate the hair structure; thus positioning these nourishment ingredients where they have the best effect.

The infrared rays enhance this by encouraging such penetration & in so doing, restores the hair's elasticity & smooths the cuticles.

This hair care iron can be used with most treatments and, particularly, with BRASIL CACAU KERATIN NOURISHMENT TREATMENT & ARGAN VELVET.

PLEASE NOTE: THIS IRON DOES NOT GENERATE HEAT & DOES NOT STRAIGHTEN HAIR.
6945



GAMMA PIÙ PROFESSIONAL - Made in Italy. Well-priced electrical solutions.

Gamma+

RAINBOW ANTISTATIC IRONS

- 230°C maximum temperature for every styling need.
- 25.5 x 10mm plate size for larger surface area with silky plate design which eliminates the possibility of snagging.
- Anti-static rainbow finish that eliminates the fly-away effect on hair.
- Digital temperature control.
- Can be locked for added safety.



Black
12477



Lime
12479

HIGH PERFORMANCE PROFESSIONAL FLAT IRONS

- Dual function: straighten & curl.
- Finest quality 25mm ionic 3D floating plates & rounded body edge to easily straighten, create flips, curls, twists or spirals.
- 11 digital temperature settings from 135-235°C.
- Digital LED Display.
- Auto safety shut-off after 30 minutes of inactivity.
- Travel lock, keeps iron in closed position.
- Cool tips, ideal to apply additional pressure when desired.
- Comfortable ergonomic thumb rest.
- One pass styling, ultra-smooth & snag-free.
- Longer plates at 110mm designed to reach roots easily & for faster styling.
- High performance dual-ceramic heaters are gentler, leaving hair healthier & shinier.
- Instant heat-up & temperature recovery.
- Even heat distribution on plates.
- Premium electronic Ion Generator, for more shine & less frizz.
- 360 degree swivel cord.
- Dual voltage for worldwide use.

PREMIUM ION GENERATOR

Healthier hair & beautiful, smooth results with more shine & less frizz.



TRAVEL LOCK

Keeps iron in closed position. Protects plates from damage during storage or travel.



HEAT-RESISTANT MAT POUCH INCLUDED

- Protects work surfaces from heat damage.
- Pouch is perfect for storage & travel.
- Unique slip-free texture design.



Ceramic + Ion™ Plates
15640

Titanium + Ion™ Plates
16181

JAGUAR STRAIGHTENERS



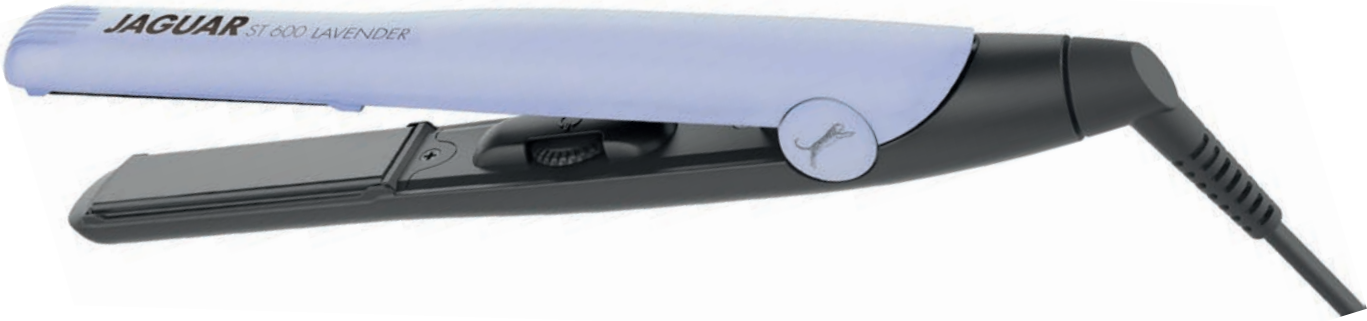
ST600

25mm ceramic-coated plates for all hair types & thicknesses.

- Fast heat-up with 200°C reached within 1 minute.
- 3 meter, 360 degree swivel cord for easy maneuverability & to prevent discomfort.
- Individual, variable temperature control from 60°C-230°C.
- Ideal for straightening & curling.
- Lightweight at only 433g.
- Precise heat control & recovery for consistent results every time.

Lavender

18639



BLISS HOT AIR STYLING BRUSH

- All-in-one styling brush to dry, style, straighten & curl hair with an incorporated motor to blow hot air onto hair.
- Hot bristles dry, smooth & style hair at the same time.
- Ideal for curling or straightening hair.
- 1200 Watts of drying power.
- Smart air & temperature settings for fine, medium & coarse hair.
- High & low power settings.

- Cold shot setting.
- Combination bristles on outside of brush style & volumize all hair types.
- Specialized holes in brush head for uninterrupted channeling of hot air from motor.
- Thin & ergonomic.
- Low noise operation.
- Ionic generator for frizz-free results.
- 360 degree swivel cord power cord.

18313



CURL ME

- Black ceramic barrel.
- Variable temperature control from 120-210°C.
- Proven design & quality soft touch finish.
- Dual voltage for worldwide use.
- PTC heater.
- Creates lasting curls, especially when paired with curl enhancing sprays, creams, lotions & treatments.
- Foldable stand protects curler when not in use.
- Ideal for creating unique curls.
- Automatic shut-off after one hour without use.
- 360 degree swivel cord power cord.



19mm Mini
18319



25mm
18248



32mm Max
18584

CURLY CURL CONICAL WAND 2.0

- Soft touch body.
- Black titanium.
- PTC heater.
- Variable temperature from 80-210°C.
- Conical barrel that tapers from 26-19mm.
- Automatic shut-off after one hour without use.
- 360 degree swivel cord power cord.
- Heat glove included.

18583



**TRIPLE WAVER**

- Triple barrel design allows for quick & efficient curl creation in less time.
- Narrow barrels are perfect for creating tight & defined curls that last.
- Black soft touch housing with black ceramic barrel.
- Five heating settings from 120 - 210°C.
- Dual voltage for worldwide use.
- PTC heater.
- Automatic shut-off after one hour without use.
- Heat glove included.

18125**GLIDE CERAMIC HEATED BRUSH**

- Dual voltage for worldwide use.
- PTC heater.
- Compact size & lightweight.
- Temperature range: 130 - 210°C.
- 90 second heat-up to 180°C.
- Unique comb design:
 - Long silicone teeth to hold hair perfectly.
 - Plastic teeth - short teeth to style hair.
 - Ceramic metal comb to supply sufficient heat for styling.
- Automatic shut-off after one hour without use.
- 360 degree swivel cord.
- Negative ions keep hair shiny & smooth.

16985**ADJUSTABLE CERAMIC WAVER**

- 3 adjustable waver height positions for different looks.
- Simply twist the control at end of the waver to increase or decrease the size of the waves.
- PTC heater.
- Temperature range: 120 - 210°C.
- 60 second heat-up to 180°C.
- Ion-releasing technology results in smooth & shiny hair.
- Dual voltage for worldwide use.
- Lock mechanism, ideal for travel & storage.
- Automatic shut-off after one hour without use.

16986

**WONDERCURL WAVER**

- A redesigned waver for the most intense waves.
- Extreme barrel design creates extreme kinks & waves.
- Soft pastel pink color.
- Dual voltage for worldwide use.
- PTC heater.
- Digital variable heat control with LED display to set temperatures 120, 150, 170, 190 & 210°C.
- Deep, double "S"-shaped ceramic-coated plates for added volume boost.
- Ceramic material improves hair shine.
- Ionic generator seals in natural oils.
- Ideal for loose & deep curls.
- Automatic shut-off after one hour without use.
- Lock mechanism keeps waver safe & secure, & also ideal for packing away for travel.
- 3 meter, 360° swivel cord power cord.

18285**HOLLY WOOD WAVER**

- Deep double 32mm "S" shaped ceramic-coated plates for added volume boost.
- Elegant sage green color.
- Ideal for loose & deep curls.
- 5 temperature settings: 120, 150, 170, 190 & 210°C.
- Thermal fuse heater.
- Ionic generator.
- Automatic shut-off after one hour without use.

18582

COLD SHOT AIRWAVE CURLER

- 25mm ceramic plates.
- Revolutionary design & functionality.
- Blows cold air to fortify & reinforce curl structure, setting them in place – no more limp & drab curls.
- Cold air increases longevity of all curls.
- Dual voltage for worldwide use.
- PTC heater.
- Temperature range from 120-210°C.
- Quick 40 second heat-up time.
- Cold air shot minimizes heat damage to hair.
- Maximum versatility – use for styling, waving, straightening, flipping & curling.
- Automatic shut-off after one hour without use.

18212

SEE IT IN ACTION:



BOUNCE & SHINE CURLER

- Achieve the straightness with the ease of a brush.
- Creates smooth, straight & luscious styles fast.
- Curl & straighten as you need.
- Variable temperature from 120-210°C.
- Dual voltage for worldwide use.
- 3 meter swivel cord with 360 degree swivel action.

12453

TEXTURE VOLUMIZING IRON

Bespoke volumizing hot iron for creating intense texture, kinks, crimps & coils. This iron has specialized textured plates with square peaks & valleys that perfectly fit when both plates close together. When hair is between these shapes, intense heat creates unique & interesting textures. This volumizing iron is perfect for fans of textured hair. Adds dimension & life to dull, flat, limp, thinner hair types.

Features:

- Soft pastel pink color.
- Double checkerboard 31mm ceramic-coated plates.
- Creates intense volume, presence & unique styling possibilities.
- LED control panel for easy temperature changes.
- 5 temperature settings: 130, 150, 170, 190, & 210°C.
- Quick 60 second heat-up time to max temperature.
- Memory function that remembers your previous settings.
- Dual voltage for worldwide use.
- PTC heater for added safety, more uniform heat distribution, lower power consumption & faster heat-up times.
- Ionic generator creates shine, & seals natural oils in the hair to prevent it from drying out.
- Travel lock button.
- Automatic shut-off after 30 minutes without use.
- 3 meter swivel cord with 360 degree swivel action.

18354



RAINBOW KORNER XL CURLER & WAVER

Create curls & waves with no stress. A tapered wand barrel design allows for versatile curls & waves. Shape curls of different sizes & shapes to perfectly suit each styling need.

Diameter of barrel:
Base: 16mm
End: 32mm

Key Benefits:

- Antistatic rainbow finish reduces electrostatic effect on the hair, taming frizz & fly-away strands.
- 4 quick heating adjustments: 170, 190, 210, 230°C.
- Ergonomic grip prevents musculoskeletal disorders.
- Very lightweight for easy long sessions.
- Safety sleep mode – iron automatically shuts down after 60 minutes without use.
- Safe grip at end of barrel for holding during styling.
- Includes anti-burning glove & pad, as well as two hair clips.

16825



IRON BUBBLE RAINBOW CURLER

For regular ringlet type curls, cool top for handling.

- Maximum temperature of 200°C.
- 25mm barrel
- Weight of 230g.
- Creates long-lasting curls in record time.
- Dual voltage for worldwide use.
- On/off luminous switch.
- Anti-static finishing.
- Rotating cord.
- Enhanced ionic technology.
- Anti-sliding handle.

12482



JAGUAR CURLING IRONS



COSY CURL OVAL CURLING IRON

Oval curling iron with a maximum temperature of 200°C. Use for creating beautiful waves & curls on all hair types, thanks to its oval shape. Protective cool tip for easy holding while styling. Weighs 440 grams. Ceramic/tourmaline coated aluminium oval heating rod heats up to 100°C in 1 minute, & is at 200°C within 3 minutes. Features 3 temperature settings from 120-200°C for fine, medium or thick hair. Set temperature is shown on the LED screen. Its 26 x 40mm rod diameter allows for waves & curls of all shapes & sizes.

Automatically shuts of iron after one hour without use. Rotating cable coupling ensures maximum freedom of movement. Built-in storage stand protects iron when not in use. Includes heat-resistant bag for storage.

17508

SUTRA ADVANCE IONIC CERAMIC HEAT BRUSH - The next generation of heat brushes



- Negative ion technology allows brilliant straightening capabilities, delivering results that leave hair sleek, shiny & lustrous.
- Heats to 230°C in rapid time.
- Temperature stays constant throughout use.
- 360 degree swivel cord.
- Cast iron base with ceramic coating.
- Auto shut-off.
- Vinyl heat-resistant tips that do not break off & snag hair.
- Scalp protection technology.
- Handle will not heat up.
- Dual voltage for worldwide use.
- LED display.

Pink/Black
13069



STRAIGHTENER ACCESSORIES

STRAIGHTENER HOLDERS

Elektra Ceramic Iron Holder
Purple
4555



HEAT GLOVES

Heat-Resistant Glove
2 fingers & thumb
Black
5873



HEAT MATS

Silicone Heat-Resistant Mat for Hot Tools, Small
Black
15934



Barber Mat
48 x 33cm, 3mm thickness
18107



STRAIGHTENER BAGS & POUCHES

Straightener & Tong Pouch, 36.5cm



Wild Side
7393



Free Spirit
7395



Glitz & Glam
7394



Simple Chic
7396

Stitched Bag for Straighteners & Tongs, 33cm, Empty
Black & White
5654



Black & Pink
5653



Travel Bag for Straighteners & Tongs, 30cm, Empty
Pink
6034



Black
6035

