

Colored wigs using the techniques & styles that epitomize Manic Panic.

A wide variety of wig styles for those wanting to change up their look with vivid color in varying lengths.

All wig pieces are synthetic, vegan & can be styled using heat.

- Compatible with heat styling tools with heat resistance up to 120°C.
- Hand washable material for keeping wig clean & fresh.
- Fully adjustable wig cap for secure fit, realistic look & feel.
- Professional quality synthetic wig.
- Can be trimmed to create unique shape & style.
- Cruelty-free & vegan.

**MANIC
PANIC**



Siren™ Wig - Psychedelic Sunrise™

Long heat styleable wig with wavy curls & bangs in a warm & sunny red-orange & yellow ombre style - rise & shine with this beautiful blend of Electric Lava™ into Psychedelic Sunset™ & Sunshine™.

17458



Siren™ Wig - Cotton Candy Angel™

Long heat styleable wig with wavy curls & bangs in a yummy pastel pink & blue split dye style - candy-coated on each side in Pastel-ized™ Cotton Candy™ Pink & Blue Angel™ Creamtone®.

17459



Siren™ Wig - Mermaid™ Ombre

Long heat styleable wig with wavy curls & bangs in a cool sea blue-green turquoise ombre style - a perfect oceanic melt of Mermaid™ into Siren's Song™ & Sea Nymph™.

17460



Siren™ Wig - Fuchsia Passion™

Long heat styleable wig with wavy curls & bangs in a luscious purple-pink fuchsia ombre style - a delectable melt of Plum Passion™ into Fuchsia Shock™.

17461



Super Vixen™ Wig - Amethyst Ombre™

Long & straight heat styleable wig with side parting & dark root in a magical crystalline ombre blend of Electric Amethyst™ into Mystic Heather™.

17462



Super Vixen™ Wig - Sea Nymph™

Long & straight heat styleable wig with side parting & dark root in minty fresh pastel green Sea Nymph™ Creamtone® color.

17463



Super Vixen™ Wig - Vampire's Kiss™

Long & straight heat-styleable wig with side parting in deep Raven™ black with vibrant streaks as blood red as a Vampire's Kiss™.

17464



Queen Bitch™ Wig - Unicorn Dreams™

Long heat-styleable wig with drop curls & side parting in a mystical unicorn rainbow of soft & creamy pastels, including Pastel-ized™ Cotton Candy™ Pink, Atomic Turquoise™, Sunshine™ & Velvet Violet™ Creamtone®.

17466



Trash Goddess™ Wig - Fleurs Du Mal™

Mid-length heat styleable wig with bangs in a pastel pink & purple ombre style - a petal-soft blend of Velvet Violet™ Creamtone® into Fleurs du Mal™ Creamtone®.

17468



Trash Goddess™ Wig - Venus Envy™

Mid-length heat styleable wig with bangs in an electric green to neon yellow ombre style. Make everyone green with envy in this shocking blend of Venus Envy™ into Electric Banana®.

17469



Glam Doll™ Wig - Blue Valentine™

Heat styleable bob wig with bangs in a shockingly vibrant split dye style of Hot Hot™ Pink & Atomic Turquoise™ - two of the most popular & all-time classic shades.

17470

Bangs today, gone tomorrow. Change your hair style as quickly & as easily as you change your mind. Synthetic Tru2Life® fiber can be heat-styled & cut to help you define your look. It is an exclusive fiber for the highest quality, most refined hairpieces. Blow dry, flat iron or curl it! **However, ensure you keep your iron temperature at 180°C or lower.** Perfect Match! Each color is a combo of 7 - 11 different shades to help you get the most natural look that blends with your own hair.

Straight Extension Kit, 16 inch (40.6cm), 8 Pieces
Solidify your glam gal clout with the ultimate in length & volume - straight up. This 8 piece Straight Extension Kit adds ahh-inducing length & luxurious volume in seconds. Use one or as many extensions as you want to dial up the drama. Includes eight 40.6cm pieces in these widths: • One 7" (17.7cm) piece • One 6" (15.2cm) piece • Four 4" (10.1cm) pieces • Two 2½" (6.3cm) pieces







R2
Ebony
15143

R4
Midnight Brown
15144



R6
Dark Chocolate
15142

R6/30H
Chocolate Copper
15139

R10
Chestnut
15137

R1416T
Buttered Toast
15138

R14/25
Honey Ginger
15141

R14/88H
Golden Wheat
15140

R22
Swedish Blonde
15145

Simply Straight Pony, 18 inch (46cm)
This strut-your-stuff pony delivers the style points straight up. This wrap-around piece instantly adds length, verve & volume to your pony. Easily put the Simply Straight Pony high, low or to the side. This hairpiece features a strip of hair that wraps around the holder & fastens with a hook-and-loop strip to conceal where the ponytail meets your own hair.







R2
Ebony
15153

R4
Midnight Brown
15149



R6
Dark Chocolate
15152

R6/30H
Chocolate Copper
15146

R10
Chestnut
15151

R1416T
Buttered Toast
15150

R14/25
Honey Ginger
15148

R25
Ginger Blonde
15154

R14/88H
Golden Wheat
15147

R22
Swedish Blonde
15155

Fineline® Wavy Extension Kit, 22 inch (55.8cm), 4 Pieces
Want some wave without the bulk? This 4 piece Fineline® Extension Kit has the perfect amount of hair with the perfect wave. Tru2Life® heat-friendly synthetic hair lets you touch up the wave or change it up. With Fineline® construction, the hair is stitched to a thin layer of polyurethane, resulting in lighter, thinner, virtually undetectable pieces that lay flat to the head for a more comfortable, natural looking effect. Includes four 55.8cm long pieces in these widths: • One 10" (25.4cm) piece • One 5½" (13.9cm) piece • Two 2" (5cm) pieces







R2
Ebony
15157

R4
Midnight Brown
15164



R6
Dark Chocolate
15158

R6/30H
Chocolate Copper
15160

R10
Chestnut
15156

R1416T
Buttered Toast
15159

R14/25
Honey Ginger
15163

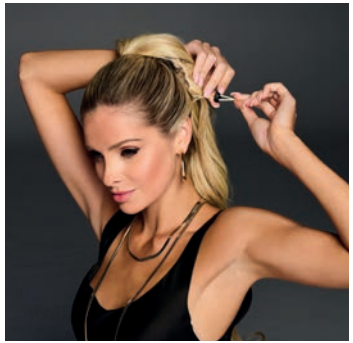
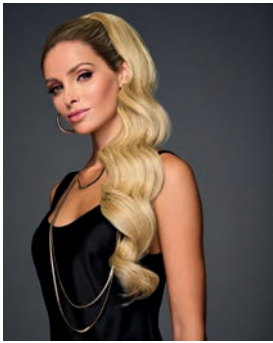
R25
Ginger Blonde
15161

R14/88H
Golden Wheat
15162

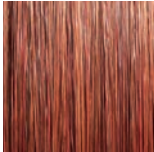
R22
Swedish Blonde
15165

Hollywood Waves Cinched Pony, 27 inch (68.6cm)

Instantly create a Hollywood starlet waved pony in seconds. This extra-long pony is made extra easy with an innovative pocket attachment that you can place effortlessly on top of your bun or pony to get that glamorous waved pony length. Tru2Life® heat-friendly synthetic fiber looks & feel like your own hair, but even better. This piece looks red-carpet ready at all times, even in humid weather.



R1 Black
18899



R33/31 Spice
18901



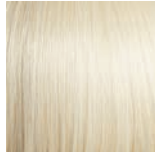
R25 Ginger Blonde
18902



R16/23 Oatmeal
18898



R22 Swedish Blonde
18900



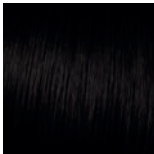
R23/61 Alabaster
18897

Hollywood Straight Cinched Pony, 27 inch (68.6cm)

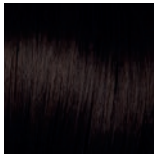
Looking for that princess-esque pony that just keeps going & going? This is the attachment for you. This super long pony is your new go-to. Now it's super easy to go from short & skimpy to full, long & STUNNING! With just a few clips in place, you can get that pony you think about in your dreams. Get an extra-long blowout look or tap into the styling versatility of the Tru2Life® heat-friendly synthetic hair to add texture, curls or wild waves.



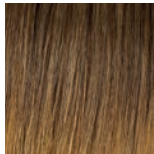
R1 Black
18908



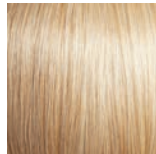
R2 Ebony
18903



R4 Midnight Brown
18904



R1416T Buttered Toast
18905



R16/23 Oatmeal
18906



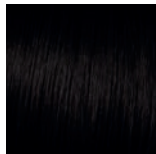
R23/61 Alabaster
18907

Coily Wrap

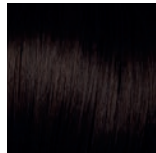
Embrace your natural texture & flaunt what makes you unique! Take the stress out of getting dressed with this one-of-a-kind, perfectly curled, elasticized wrap that guarantees a good hair day, every day! Hair Length: 7". Curl Diameter: 1/2" - 3/8"



R1 Black
18894






R2 Ebony
18895

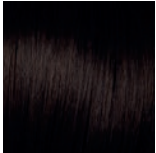
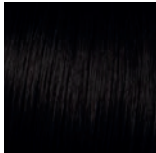


R4 Midnight Brown
18896

Fineline® Straight Extension Kit, 22 inch (55.8cm), 4 Pieces

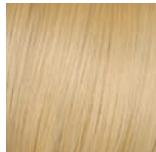

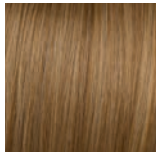
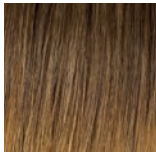
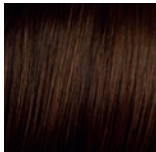
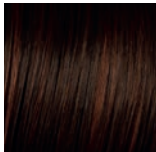
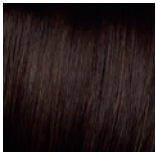
Fine hair? No problem with the Fineline® Straight Extension Kit. This unbelievable construction gives you length & volume without the bulk. Achieve a smooth & seamless application that's light & incredibly comfortable. The 22" (55.8cm) length extends mid-back to add lovely length while the 4 piece construction adds va va volume. Includes four 55.8cm pieces in these widths: • One 10" (17.7cm) piece • One 5" (12.7cm) piece • Two 2" (5cm) pieces





R2
Ebony
15168

R4
Midnight Brown
15174



R6
Dark Chocolate
15167

R6/30H
Chocolate Copper
15170

R10
Chestnut
15166

R1416T
Buttered Toast
15169




R14/25
Honey Ginger
15173

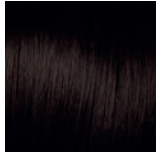
R25
Ginger Blonde
15171

R22
Swedish Blonde
15175

Straight Extension Kit, 22 inch (55.8cm)




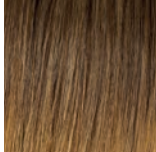
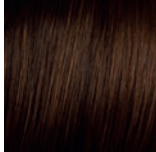
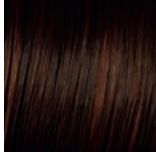

A fairy tale-worthy mane is a breeze with this straight, one-piece extension that gets short hair falling below the shoulder & long hair appearing thicker & more luxurious. One piece equals easy fashion change-ups in a snap via exclusive multi-level construction. Made with Tru2Life® heat-friendly synthetic hair that can be flat-ironed, curled or blown out.





R2
Ebony
15180

R4
Midnight Brown
15184



R6
Dark Chocolate
15179

R6/30H
Chocolate Copper
15178

R10
Chestnut
15177

R1416T
Buttered Toast
15176

R14/25
Honey Ginger
15183

R25
Ginger Blonde
15181

R14/88H
Golden Wheat
15182

R22
Swedish Blonde
15185

Straight Color Extension Kit, 23 inch (30.4cm), 4 inch (10.1cm) wide, 6 Pieces

Push pastel or stunning steel add the ultimate hair enhancement! Soft metallic colors create the perfect amount of pop with the Color Extension Kit by Hairdo. These custom-colored 23" (30.4cm) long pieces will showcase your unique style & add length with fashion-forward color. Place the pieces around the top layer of your hair or create a different effect by customizing the placement. Includes six 4" (10.1cm) wide, 23" (30.4cm) long clip-in pieces.





Berry Sorbet
15186

Chrome Mist
15187



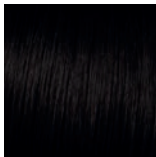
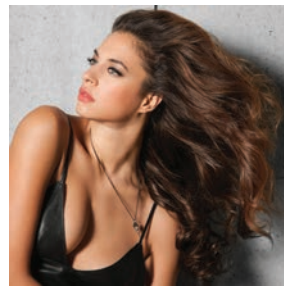
Iced Violet
15188

Pink Frost
15189

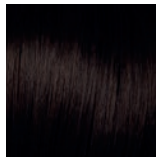
Stormy Blue
15190

Grand Extension, 23 inch (30.4cm)

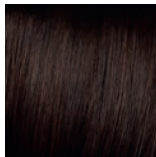
If hair extensions had a smarter, wiser, older sister, the 23" (30.4cm) Grand Extension would be it! A three-quarter-cap of luscious hair with five strategically placed pressure-sensitive clips for a secure hold. Soft, natural-looking waves add head-turning volume & movement.



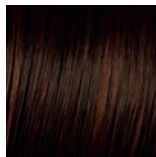
R2
Ebony
15196



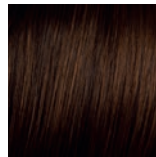
R4
Midnight Brown
15197



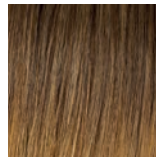
R6
Dark Chocolate
15195



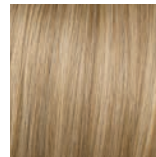
R6/30H
Chocolate Copper
15194



R10
Chestnut
15193



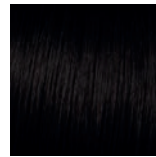
R1416T
Buttered Toast
15191



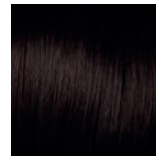
R14/88H
Golden Wheat
15192

Wavy Extension, 23 inch (30.4cm)

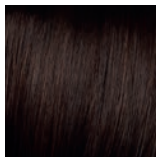
Say "yes please!" to loosely-spiraled layers & the hassle-free design of this one-piece, multi-level extension. Gorgeous, jaw-dropping length & volume for days is yours in an instant. Attaches with 7 pressure-sensitive clips.



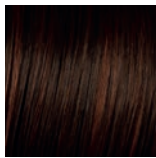
R2
Ebony
15202



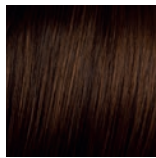
R4
Midnight Brown
15204



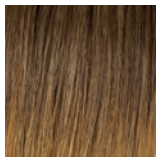
R6
Dark Chocolate
15201



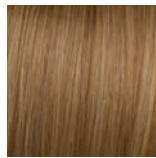
R6/30H
Chocolate Copper
15200



R10
Chestnut
15199



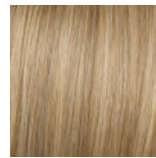
R1416T
Buttered Toast
15198



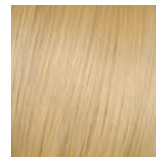
R14/25
Honey Ginger
15207



R25
Ginger Blonde
15203



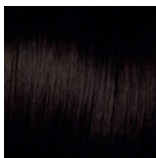
R14/88H
Golden Wheat
15206



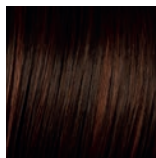
R22
Swedish Blonde
15205

French Braid Band

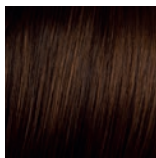
Whether your spirit animal is a romantic hippie or a glam rock goddess, the French Braid Band will have your Coachella crew cooing, c'est magnifique! The French Braid Band is as quick & easy as putting on a headband... in a flash you're ready for any & all adventures! Sold individually.



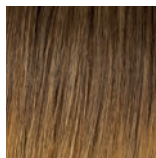
R4
Midnight Brown
15213



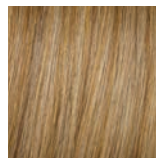
R6/30H
Chocolate
Copper
15216



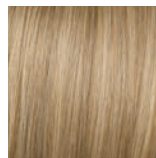
R10
Chestnut
15215



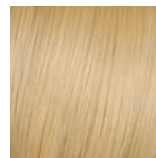
R1416T
Buttered Toast
15210



R25
Ginger Blonde
15211




R14/88H
Golden
Wheat
15212





R22
Swedish Blonde
15214

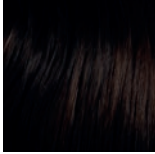
Highlight Wrap

Take a fancy to this alluring, wrapped up-do. This patented style easily wraps around any bun, chignon or ponytail with a secure comfort elastic band holder. The Highlight Wrap incorporates multi-tonal shades & varying lengths, from 3¼-6 inches (8.25 - 15.2cm) to get you mad "wrap star" cred.

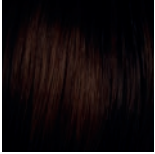




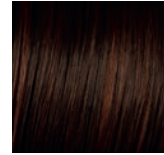




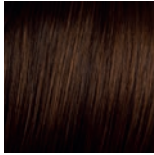
R2/6
Ebony HI LT
15220




R4/8
Midnight Brown HI LT
15224




R6/30H
Chocolate Copper
15219




R10
Chestnut
15218




R1416T
Buttered Toast
15217




R14/25
Honey Ginger
15223



R25
Ginger Blonde
15221




R14/88H
Golden Wheat
15222





R22
Swedish Blonde
15225

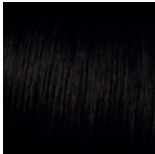
Invisible Extension, 20 inch (50.8cm)

Heavenly hair isn't just for runway models & Hollywood starlets anymore. Get mega-watt length & volume in seconds with this 20" (50.8cm) halo-style extension. Just slip it on like a headband & pull your own hair over it - the ingenious & inconspicuous design blends in seamlessly.

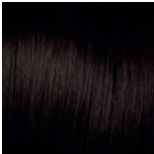




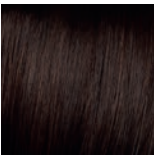




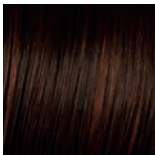
R2
Ebony
15230



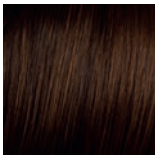
R4
Midnight Brown
15234



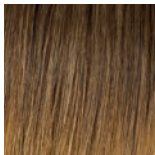
R6
Dark Chocolate
15229



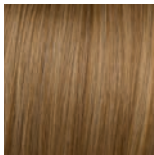
R6/30H
Chocolate Copper
15228



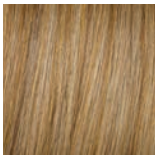
R10
Chestnut
15227



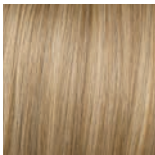
R1416T
Buttered Toast
15226



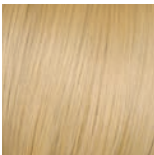
R14/25
Honey Ginger
15233



R25
Ginger Blonde
15231




R14/88H
Golden Wheat
15232



R22
Swedish Blonde
15235

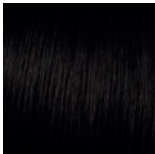
Style-A-Do & Mini-Do Duo Pack

This dynamic duo can be worn separately or together to create perfect up-dos, twisted rolls, high chignons & low chignons in no time. Just wrap these patented elastic-band pieces around a ponytail or bun to maximize your style quotient.

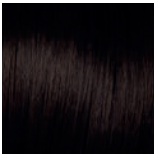








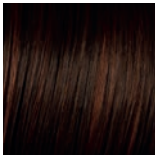
R2
Ebony
15243



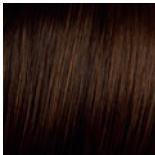
R4
Midnight Brown
15249



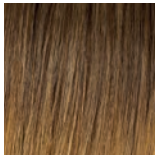
R6
Dark Chocolate
15252



R6/30H
Chocolate Copper
15246



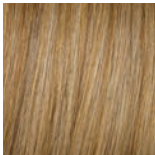
R10
Chestnut
15251



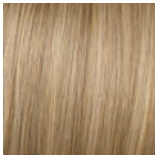
R1416T
Buttered Toast
15245



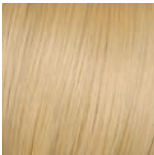
R14/25
Honey Ginger
15248



R25
Ginger Blonde
15244



R14/88H
Golden Wheat
15247



R22
Swedish Blonde
15250

Wig Fantasy - Slip into style with precision cuts & notice-me hues that mimic today's top trends. The best kept secret of Hollywood glamour types & chart-topping music stars, Hairdo wigs give you a bold beauty point-of-view & a new attitude.

Lilac Frost (Grey, Purple) - Long lilac pretty pastel waves tipped & topped with a darker root to make it bold but believable. The open cap is constructed & made to feel as cool as you'll look. Add a braid, curl it or flat iron it super-straight. **Front: 14" (35.5cm) Crown: 18" (45.7cm) Side: 16" (40.6cm) Back: 18" (45.7cm) Nape: 17" (43.1cm)**
15236



Midnight Berry (Deep Purple) - Multi-dimensional berry hue with a touch of depth at the root. Change it up & add some waves or make it super-straight to show off the angles in this cut. **Front: 12" (30.4cm) Crown: 6½" (16.5cm) Side: 8" (20.3cm) Back: 5" (12.7cm) Nape: 2" (5.08cm)**
15237



Mint To Be (Mint Green) - One of the most sought-after rooted hair colors is yours without the bleaching & stripping. The adjustable cap is made to fit comfortably & feels light & cool. Tru2Life® heat-friendly synthetic hair gives you styling versatility. **Front: 4" (13.3cm) Crown: 13½" (44.4cm) Side: 11" (36.8cm) Back: 14" (44.4cm) Nape: 12" (30.4cm)**
15238



Out Of The Blue (Rooted, Light Blue) - A bold & beautiful rooted blue. The angled cut offers natural volume. Tru2Life® heat-friendly synthetic hair so you can add some curl or wave. The lightweight cap construction makes it for comfortable wear day or night. **Front: 12" (30.4cm) Crown: 11" (27.9cm) Side: 11¼" (29.8cm) Back: 9½" (24.1cm) Nape: 6" (15.2cm)**
15239



Peachy Keen (Rooted, Peach) - The perfect shade of peachy pastel pink in a trendy bob cut. Darker at the root to add contrast & a natural look. Customize the bang & style the Tru2Life® heat-friendly synthetic hair with a curling iron or flat iron. **Front: 3¾" (9.5cm) Crown: 11½" (29.2cm) Side: 8" (20.3cm) Back: 10" (25.4cm) Nape: 5" (12.7cm)**
15240



Pinky Promise (Rooted, Pink) - A pop of pink with dark root for added contrast. The Tru2Life® heat-friendly synthetic fiber can be styled curly or completely straight. With a comfortable cap design, you can wear it for a night out or even all day. **Front: 8½" (21.5cm) Crown: 13¾" (34.9cm) Side: 12¾" (32.3cm) Back: 14" (35.5cm) Nape: 12¼" (31.1cm)**
15241

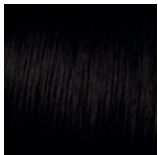


Whiteout (Rooted, Platinum 60/6) - A wickedly-white classic mid-length hairstyle, updated & made edgy with a silver white base & darker roots. Add your personal style to this cut by styling it curly or straight. The open wefted cap keeps you comfortable while you rock these locks. **Front: 10½" (26.6cm) Crown: 10½" (26.6cm) Side: 13½" (34.2cm) Back: 13½" (34.2cm) Nape: 13½" (34.2cm)**
15242

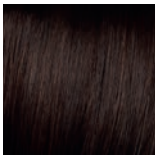


Fishtail Braid Headband

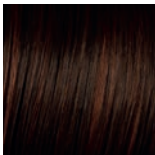
Mermaid hair is just a headband away. Add it to sleek shiny hair or pull the edges & rough it up for a look that's ready for the beach.



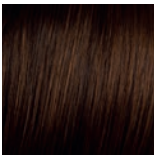
R2
Ebony
15307



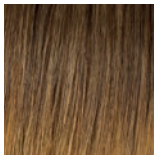
R6
Dark Chocolate
15310



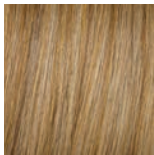
R6/30H
Chocolate Copper
15304



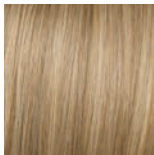
R10
Chestnut
15306



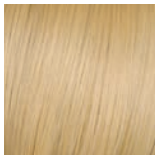
R1416T
Buttered Toast
15303



R25
Ginger Blonde
15309



R14/88H
Golden Wheat
15305



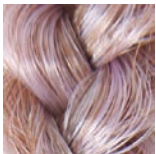
R22
Swedish Blonde
15308

Metallic Braid Extension, 20 inch (50.8cm)

Glisten & glimmer in metal-worthy braids. These single braids are the perfect addition to any hair color & style. Just clip, shine & go!



Light Purple/Black
15311



Light Purple/Blonde
15312



Pink
15314



Purple
15315



Teal
15316

Color Strip Extension, 18 inch (45.7cm)

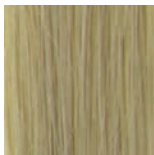
Stick to one or mix & match to brighten up your do. These heat-friendly POPs of color can be styled, braided or let loose.



Blue Frosting
15295



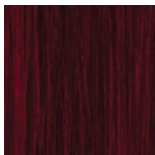
Party Dress Green
15296



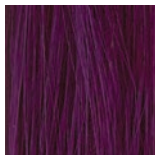
Silver Surprise
15297



Pink Sprinkles
15299



Berry Kiss
15300



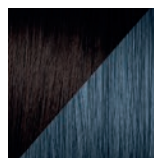
Party Purple
15301



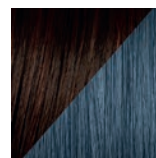
Royal Blue
15302

Color Splash Pony, 23 inch (58.4cm)

Get the 'social media star' look in an instant with the 23 inch (58.4cm) Color Splash Pony. Choose from your natural hair tone for hair bursting with highlighted & dip-dyed pastel ends: blue, pink, light green or lavender. This long & wavy pony includes a smooth strip of hair that wraps around the holder & fastens it in with a hook-and-loop strip to conceal where the ponytail meets your own hair.



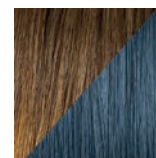
Midnight Brown
R4/Denim Blue
15264



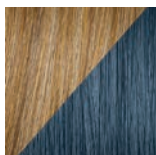
Chocolate Copper
R6/30H/Denim Blue
15255



Chestnut
R10/Denim Blue
15253



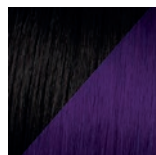
Buttered Toast
R1416T/Denim Blue
15271



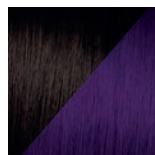
Ginger Blonde
R25/Denim Blue
15259



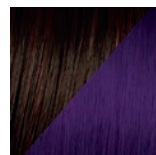
Golden Wheat
R14/88H/Denim Blue
15261



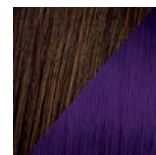
Ebony
R2/Dark Purple
15267



Midnight Brown
R4/Dark Purple
15265



Chocolate Copper
R6/30H/Dark Purple
15256



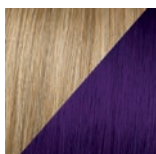
Chestnut
R10/Dark Purple
15254



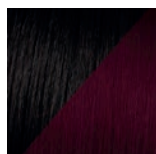
Buttered Toast
R1416T/Dark Purple
15269



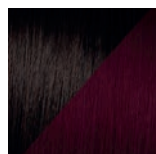
Ginger Blonde
R25/Dark Purple
15260



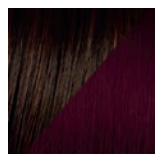
Golden Wheat
R14/88H/Dark Purple
15262



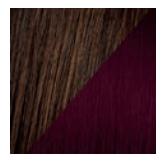
Ebony
R2/Red Wine
15273



Midnight Brown
R4/Red Wine
15268



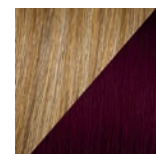
Chocolate Copper
R6/30H/Red Wine
15257



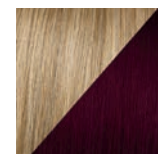
Chestnut
R10/Red Wine
15266



Buttered Toast
R1416T/Red Wine
15270



Ginger Blonde
R25/Red Wine
15258



Golden Wheat
R14/88H/Red Wine
15263

Color Splash Wrap

Morph into an edgier you with the Color Splash Wrap by Hairdo! Dare to bare your love of denim, pursue-purple or rock-it-in-red. Put your hair in a bun or loop the ends of your pony then wrap it around. Wear one or mix & match to create your own look.



Ebony
R2/Denim Blue
15279



Midnight Brown
R4/Denim Blue
15292



Chocolate Copper
R6/30H/Denim Blue
15284



Chestnut
R10/Denim Blue
15274



Ginger Blonde
R25/Denim Blue
15287



Ebony
R2/Dark Purple
15278



Midnight Brown
R4/Dark Purple
15293



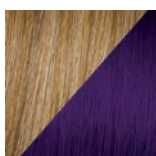
Chocolate Copper
R6/30H/Dark Purple
15285



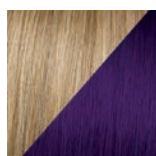
Chestnut
R10/Dark Purple
15275



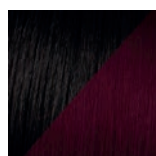
Buttered Toast
R1416T/Dark Purple
15282



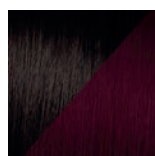
Ginger Blonde
R25/Dark Purple
15288



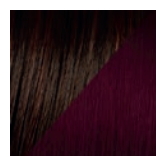
Golden Wheat
R14/88H/Dark Purple
15290



Ebony
R2/Red Wine
15280



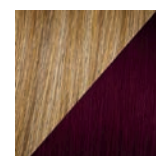
Midnight Brown
R4/Red Wine
15294



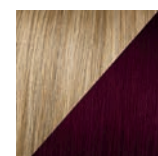
Chocolate Copper
R6/30H/Red Wine
15286



Buttered Toast
R1416T/Red Wine
15283



Ginger Blonde
R25/Red Wine
15276



Golden Wheat
R14/88H/Red Wine
15291

Hairdo Tru2Life® Color Ring
15317



Table Stand for Hair Extensions
Makes it much easier to see, compare & work with extensions. Organize strands to prevent tangling.
9372



EXTENSION MAINTENANCE LIQUID LINES

Cleanse
Clean your wigs, hair pieces & extensions with this freshening shampoo.
Specially formulated for synthetic or human hair
- pH balanced.
- Provides weightless moisture & shine.
- Gently cleanses away styling product buildup.
- Formulated to neutralize odors from wear with a fresh, light fragrance.

236ml
16159



Restore
Restore your wigs, hairpieces & extensions with this leave-in conditioner & heat-styling protector.
Specially formulated for synthetic or human hair.
- 2-in-1 detangler & protectant.
- Nourishes synthetic fibers for all-day softness.
- Protectant when styling heat-friendly synthetic fiber.

236ml
16160



YOSHE 100% HUMAN HAIR



100% virgin Remy human hair, each strand individually hand-threaded in order to maintain the hair's natural cuticle direction. Remains tangle-free & looks undeniably natural & vibrant over time.

Clip Highlight, 2 Pieces - Creating highlights is just a clip away! Add an accent to your color. 100% real hair, 24cm length.



Flip It Extensions, 35cm

100% human hair. Create volume with zero damage. Takes less than 1 minute to fit & 1 second to remove. Attaches to your head by a thin wire that is hidden by your hair.



Clip It Bang!

The allure of color... Creating a new style is just a clip away! Non-committal, safe & non-damaging, comfortable, fast to apply & remove, no tools required. 19cm length



Hair Extension 4-in-1 Caddy

Helps you wash, style, pack & store any extensions more quickly & efficiently.
Holds extensions in place to free both hands to dry & style.

1. Attach caddy to smooth, hard surface with suction cups (recommended at area where extensions are shampooed & rinsed to prevent mess).

2. Insert extensions & close top so you can wash, color, blow-dry & style. Clips in caddy prevent hair from slipping out.

3. Wrap extensions around caddy & place in travel bag for safe, easy travel or use included clips in caddy to hang extensions in dry area when not in use to keep them safe.

14260

