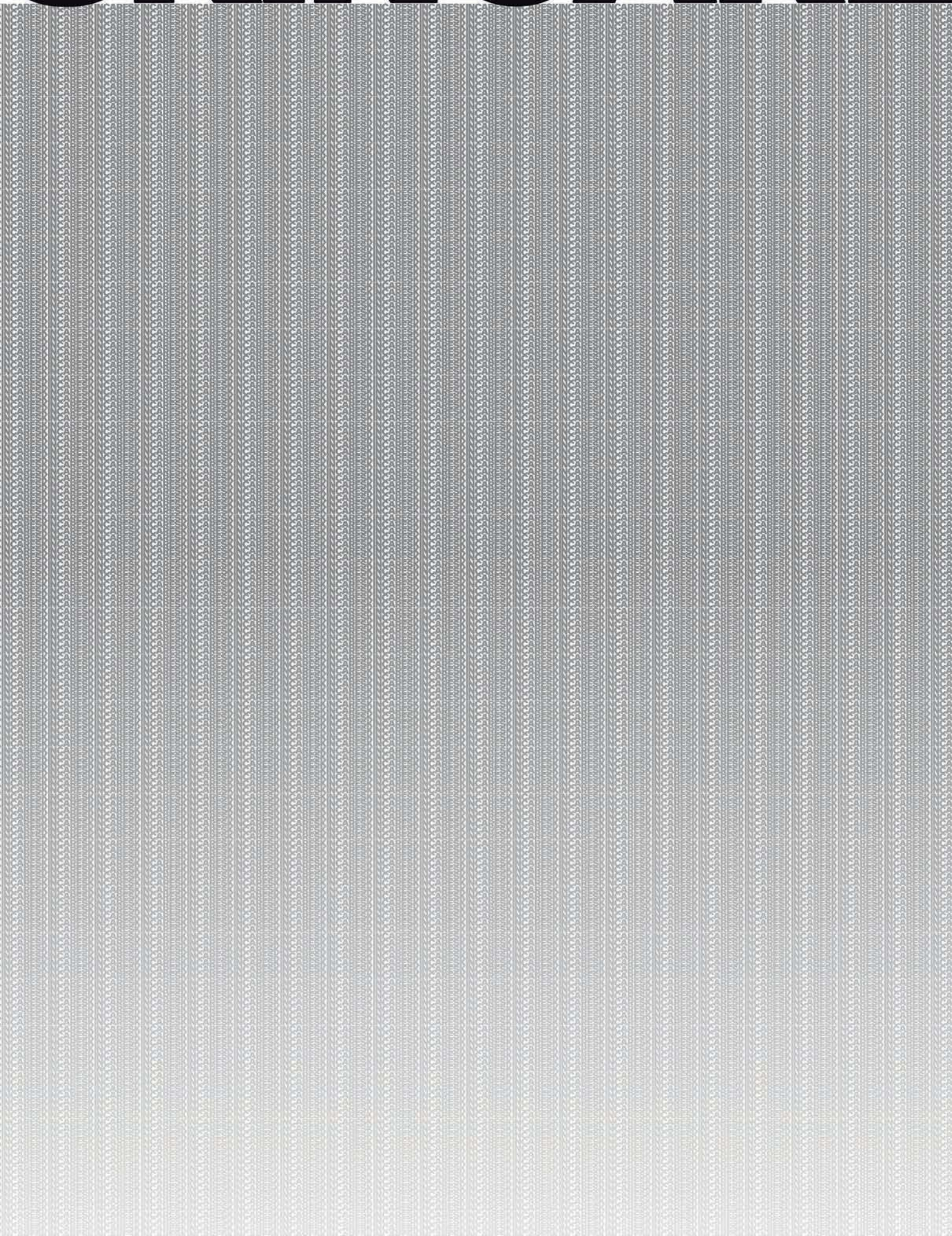


SKINCARE



NEW

SKINTRUTH®

SKIN CARE REDEFINED

A PREMIER SKIN CARE RANGE THAT SEAMLESSLY BLENDS NATURALLY DERIVED & SCIENTIFICALLY ADVANCED INGREDIENTS FOR OPTIMAL SKIN CARE. THESE THOUGHTFULLY CRAFTED TREATMENTS OFFER EXCEPTIONAL QUALITY & ARE ENRICHED WITH SPECIALIZED INGREDIENTS & ESSENTIAL OILS.

DESIGNED TO ELEVATE THE SALON EXPERIENCE, THIS RELIABLE COLLECTION DELIVERS DELIVERS OUTSTANDING RESULTS IN KEY TREATMENT AREAS, MAKING SKINTRUTH® A GUARANTEED CLIENT FAVORITE. EXPERIENCE THE FUSION OF NATURE & SCIENCE TODAY.

WHY SKINTRUTH®?

FOR OVER 20 YEARS, SKINTRUTH® HAS BEEN DEDICATED TO EMPOWERING PROFESSIONALS IN THE BEAUTY & WELLNESS INDUSTRY. THEIR LONG-STANDING PRESENCE IS A TESTAMENT TO THEIR COMMITMENT TO QUALITY & EXCELLENCE. WORKING CLOSELY WITH INDUSTRY PROFESSIONALS HAS ENSURED THEIR SOLUTIONS RESONATE WELL WITHIN SPAS, SALONS, CLINICS, & AT HOME.



SKIN CARE:

A CLASSIC COLLECTION FOR TARGET-DRIVEN PROFESSIONAL TREATMENTS FOR THE FACE & BODY.

KEY INGREDIENTS INCLUDE SALICYLIC ACID, HYALURONIC ACID, NIACINAMIDE, ZINC PCA & ALLANTOIN, TO NAME A FEW.

CATEGORIZED IN SKIN-TYPES, SKINTRUTH® OFFERS 3 COMPLETE SKIN CARE SYSTEMS FOR PROFESSIONAL FACIALS:

1. NOURISH FOR NORMAL SKIN TYPES
2. CLARIFY FOR OILY, CONGESTED SKIN TYPES
3. SOOTHE FOR SENSITIVE SKIN TYPES

NOURISH RANGE : FOR NORMAL SKIN TYPES

EXPERTLY FORMULATED TO COMPLEMENT & WORK WITH NORMAL TO DRY SKIN TYPES, THE NOURISH RANGE CONTAINS GLYCERIN, PHA, PRICKLY PEAR, WHEAT GERM OIL, & ALOE VERA TO HELP LEAVE THE SKIN FEELING HYDRATED, SMOOTH & WELL NOURISHED.

MOISTURE-MILK CLEANSER
AM/PM cleanser: Gently cleanses & hydrates, neutralizing daily stressors while soothing & balancing the skin.
200ml **19912**
500ml **19913**



MACRO-MOLECULE PHA TONER
AM/PM toner: Exfoliates & regenerates skin cells, promoting a smoother, revitalized complexion for healthy, glowing skin.
200ml **19914**
500ml **19915**



HYDROLOCK MOISTURISER
AM/PM moisturizer: Deeply hydrates & restores skin's moisture balance, leaving it soft, plump, & nourished all day.
200ml **19916**
500ml **19917**



HYDROTHERAPY MASK
Deeply hydrating intermittent skin treatment: Nourishes & replenishes the skin, providing intense hydration to restore softness & vitality.
100ml **19918**
225ml **19919**



NOURISH FACIAL KIT
Deeply hydrates & nourishes normal to dehydrated skin, leaving it feeling smooth, soft, & revitalized.

Kit Includes:
Moisture-Milk Cleanser 200ml / Macro-Molecule PHA Toner 200ml / Hydrolock Moisturiser 200ml / Hydrotherapy Mask 100ml / Fine & Gentle Rice Polish 150ml
19920



CLARIFY RANGE : FOR OILY, CONGESTED SKIN TYPES
 NATURALLY ABSORBENT CLAYS, COMBINED WITH HEALING ZINC & REFINING BHAS, WORK TOGETHER TO ADDRESS SYMPTOMS ASSOCIATED WITH OILY, BREAKOUT-PRONE SKIN. THIS FORMULATION HELPS TO REDUCE EXCESS OIL & SHINE, MINIMIZE CONGESTION, & CALM BREAKOUTS, LEAVING THE SKIN FEELING CLEARER & HEALTHIER.

SEBUM CONTROL GEL CLEANSER

Oil Absorbing Cleansing Gel: Gently cleanses & removes excess oil, helping to clarify & balance skin for a smoother, clearer complexion.
 200ml 19921
 500ml 19922



CLARIFY BHA TONER

AM/PM Anti-Bacterial Toning Lotion: Purifies & tones the skin, reducing bacteria to promote a clearer, smoother, & more balanced complexion.
 200ml 19923
 500ml 19924



SHINE CONTROL MOISTURISER

AM/PM Absorbent Moisturizer: Provides lightweight hydration & absorbs excess oil, delivering a smooth, matte finish for a balanced complexion.
 200ml 19925
 500ml 19926



PURIFY MUD MASK

Deeply Cleansing Intermittent Face Mask: Detoxifies & purifies the skin, removing impurities & excess oil for a refreshed, radiant complexion.
 100ml 19928
 225ml 19929



CLARIFY FACIAL KIT

Purifies & balances, helping to address breakouts & reduce excess oil, leaving the skin feeling healthier & clearer.

Kit Includes: Sebum Control Gel Cleanser 200ml / Clarify BHA Toner 200ml / Shine Control Moisturiser 200ml / Purify Mud Mask 100ml / Fine & Gentle Rice Polish 150ml
 19927



SOOTHE RANGE : FOR SENSITIVE SKIN TYPES

EXPERTLY FORMULATED TO MEET THE SPECIFIC DEMANDS OF SENSITIVE SKIN TYPES. THIS RANGE WILL LEAVE ALLERGIC & SENSITIVE SKIN TYPES FEELING CALM, SMOOTH & REJUVENATED.

GENTLE GEL CLEANSER

AM/PM Gentle Gel Cleanser: Softly cleanses while protecting the skin's natural barrier, leaving the complexion fresh, balanced, & nourished.

200ml **19930**
500ml **19931**



CALM CREAM TONER

AM/PM Repairing Toning Lotion: Calms & revitalizes the skin, reducing irritation & restoring balance for a smoother, more soothed complexion.

200ml **19932**
500ml **19933**



SOOTHE & SUPPORT

AM/PM Protecting Moisturiser: Strengthens & repairs the skin barrier, & provides essential hydration. Safeguards against environmental stressors for healthy, resilient skin.

200ml **19934**
500ml **19935**



RICH REPLENISHING MASK

Deeply Cleansing Intermittent Face Mask: Repairs & rejuvenates the skin, removing impurities & promoting a healthier, more radiant complexion.

100ml **19936**
225ml **19937**



SOOTHE FACIAL KIT

Gently calms & soothes sensitive skin, leaving it feeling smooth, hydrated & rejuvenated.

Kit Includes: Gentle Gel Cleanser 200ml / Calm Cream Toner 200ml / Soothe & Support Moisturiser 200ml / Rich Replenishing Mask 100ml / Fine & Gentle Rice Polish 150ml
19938



FACIAL CARE :

IN ADDITION TO SPECIFIC SKIN TYPE RANGES, THESE ADD ON SOLUTIONS HAVE BEEN DESIGNED TO ENHANCE THE TREATMENT EXPERIENCE.

FINE & GENTLE RICE POLISH

Gently Exfoliating Face Scrub: Smooths & resurfaces skin while nourishing, revealing a softer, brighter, & more radiant complexion.

150ml
19944



FACIAL WASH

AM/PM Gentle Foaming Cleanser: Gently cleanses the skin, removing impurities without stripping moisture, leaving the complexion soft, balanced & refreshed.

200ml
19946



SILK AMINO EYE MAKEUP REMOVER

Remove All Makeup: Non-stripping, pH-balanced eye cleanser. Suitable for stubborn make-up removal or gentle cleansing of the eyes.

200ml **19975**
500ml **19945**



TARGETED FACIAL CARE :

THE TARGETED FACIAL CARE RANGE IS A TAILORED APPROACH, DESIGNED TO ENHANCE ANY FACIAL OFFERING. ADVANCED SYSTEMS ENABLE THE OPPORTUNITY TO ELEVATE IN-SALON OFFERINGS, OR BOOST AT-HOME SKIN CARE REGIMES.

<p>HYDRATION ACTIVATOR SERUM AM/PM Intense Hydration: Deeply nourishes & plumps the skin, reducing the appearance of fine lines for a smooth, youthful complexion. 30ml 19939</p> 	<p>VITAMIN C YOUTH-SHIELD SERUM AM/PM Renewing & Energizing Formula: Revitalizes the skin, boosting radiance & brightness for a refreshed, glowing complexion day & night. 30ml 19940</p> 	<p>ANTI-AGE PLUMP & PROTECT SERUM AM/PM Tightening & Firming Formula: Lifts & firms the skin while brightening the complexion for a smoother, more youthful appearance. 30ml 19941</p> 	<p>NOCTURNAL NOURISHMENT OIL PM Formula: Supports cellular regeneration overnight, improving skin function & promoting a rejuvenated, refreshed complexion by morning. 30ml 19942</p> 	<p>NIACINAMIDE - BRIGHT EYE CREAM AM/PM Plumping Eye Cream: Smooths & hydrates the delicate eye area, reducing the appearance of fine lines for a refreshed, youthful look. 30ml 19943</p> 
--	--	---	--	---

BODY CARE :

AN EXFOLIATING DUO THAT FEATURES A VARIETY OF MEDIUMS, PROVIDING THE FLEXIBILITY TO MEET CLIENTS' NEEDS FOR BOTH GENTLE & DEEP EXFOLIATION.





MASSAGE :

A COMPREHENSIVE SELECTION OF MASSAGE MEDIUMS CRAFTED TO PROVIDE A LUXURIOUS EXPERIENCE FOR THE ENTIRE BODY & FACE.

<p>STIMULATING BODY SCRUB Deeply Exfoliating Full Body Scrub: Revitalizes & energizes the skin, removing dead cells for a smoother, refreshed, & invigorated complexion. 450ml 19947</p> 	<p>SMOOTHING BODY SCRUB Gently Exfoliating Full Body Scrub: Smooths & resurfaces skin while nourishing, leaving the body soft, refreshed, & deeply revitalized. 450ml 19948</p> 	<p>DERMAFLOW FACIAL MASSAGE CREAM Hydrating Massage Medium for the Face: Provides intense moisture while enhancing circulation, leaving skin refreshed, nourished, & deeply hydrated after every use. 450ml 19949</p> 	<p>RICH BODY MASSAGE CREAM Rich Body Cream: A luxurious massage medium suitable for all skin types, deeply hydrating & nourishing for soft, smooth skin. 450ml 19950</p> 	<p>PROFESSIONAL MASSAGE OIL Gentle Massage Experience: Blended massage base oils for professional massage treatments. 500ml 19951</p> 
---	--	--	--	---

TREATMENT GELS :

THE TREATMENT GEL RANGE OFFERS TARGETED SKIN CARE FOR ANTI-AGING, SKIN RENEWAL, & RELIEF FROM IRRITATION, PROMOTING SMOOTHER, HEALTHIER SKIN FOR FACE & BODY.

<p>HYDRA-COLLAGEN MICROCURRENT GEL Hydrating Collagen Facial Gel: Boosts effectiveness when used with an at-home microcurrent machine, enhancing skin tone, texture, & overall rejuvenation for optimal results. 500ml 19952</p> 	<p>FACE & BODY COLLAGEN GEL AM/PM Collagen-Boosting Formula: Replenishes depleted collagen, enhancing skin elasticity & firmness for a smoother, more youthful complexion. 250ml 19953</p> 	<p>HYDRASOOTHE ALOE VERA GEL Soothing Aloe Vera Gel: A calming & soothing gel that provides immediate relief for problem skin types. Redness, damaged skin areas, inflammation & spots of irritation are immediately soothed. 500ml 19954</p> 	<p>ARNICA REMEDY GEL Relief From Pains & Overexertion: Fast absorbing treatment gel for relief of joints & muscles after overexertion or general pain. Active ingredients soothe the body & provide pain relief. 500ml 19955</p> 
---	---	---	---

MANICURE :

A PREMIUM PRODUCT RANGE DESIGNED FOR THE MODERN CLIENT SEEKING EXCEPTIONAL HAND CARE. ENSURES AN INDULGENT EXPERIENCE FROM PREPARATION TO APPLICATION, COMBINING QUALITY & LUXURY. INFUSED WITH ORANGE BLOSSOM & ROSEMARY, THE RANGE OFFERS UPLIFTING & RESTORATIVE BENEFITS, WHILE PROVIDING MOISTURIZING & PROTECTIVE PROPERTIES. ENSURES FLAWLESS, PROFESSIONAL MANICURES EVERY TIME.

HAND TREATMENT HYGIENE SPRAY

Sterilizing Hand Spray: Effectively sanitizes while hydrating & refreshing hands, leaving them clean, moisturized, & comfortably soft.

200ml
19956



REVITALIZING HAND SOAK

Revitalizing & Brightening Hand Soak: Nourishes & brightens skin, softening hands while promoting a smoother, more radiant & refreshed appearance.

500ml
19957



REFINING HAND SCRUB

Regenerating Hand Exfoliator: Gently removes dead skin cells, softening & revitalizing hands for a smoother, more nourished complexion.

450ml
19958



REPLENISHING HAND MASK

Nourishing Hand Mask: Deeply hydrates & soothes, leaving hands feeling soft, smooth, & replenished with lasting moisture & comfort.

450ml
19959



NOURISHING HAND LOTION

Protecting & Hydrating Hand Cream: Provides deep hydration & protection, leaving hands soft, smooth, & shielded from dryness & environmental stressors.

500ml
19960



CUTICLE OIL

Cuticle & Nail Nourishing Oil: Richly nourishes both nails & cuticles, promoting healthy growth & soft, hydrated skin for a polished look.

15ml 19965
50ml 19966



HAND TREATMENT CREAM

Rich Hand Hydration Cream: An intense hand cream to provide immediate relief for rough, dry skin on the hands. Hands are left smooth & supple, rehabilitating problem skin & returning it to a healthy state.

450ml
19964



ACETONE

A versatile, multi-purpose solution perfect for cleaning, removing polish, & tackling tough stains with precision & effectiveness.

500ml
19962



MANICURE KIT

A complete manicure system designed to nourish, refine, & rejuvenate the hands, leaving them soft, smooth, & beautifully cared for.

Kit Includes: Hygiene Spray 200ml / Refining Hand Scrub 100ml / Revitalizing Hand Soak 200ml / Nourishing Hand Lotion 150ml / Replenishing Hand Mask 150ml
19961



PEDICURE :

INDULGE THE FEET WITH A LUXURIOUS COLLECTION OF FOOT SOAKS, SCRUBS, LOTIONS & MASKS, DESIGNED FOR THE ULTIMATE PAMPERING EXPERIENCE. THIS EXQUISITE RANGE COMBINES ESSENTIAL OILS & PLANT EXTRACTS TO SOOTHE TIRED FEET, INVIGORATING & REVITALIZING WITH EACH USE. CONDITIONS & RESTORES MOISTURE, CREATING A UNIQUE, HIGH-QUALITY PEDICURE SYSTEM THAT REJUVENATES & REFRESHES.

FOOT SOAK

Refreshing Foot Soak: Revitalizes tired feet by soothing & softening, providing a refreshing, rejuvenating experience for ultimate relaxation.
500ml
19967



HYGIENE SPRAY

Refreshing & Sterilizing Spray
A sterilizing foot spray that effectively cleanses, refreshes, & deodorizes, leaving feet feeling cool, fresh, & hygienic.
250ml
19968



FOOT SCRUB

Exfoliating & Nourishing Foot Scrub: Gently exfoliates & nourishes, removing dead skin & leaving feet soft, smooth, & deeply hydrated for ultimate comfort.
1200ml
19969



FOOT MASK

Nourishing Foot Mask: Softens & soothes tired feet, deeply hydrating & replenishing for a smoother, more rejuvenated feel.
1200ml
19970



FOOT & LEG LOTION

Hydrating Foot & Leg Cream: Deeply moisturizes & restores hydration, leaving feet & legs soft, smooth, & revitalized with lasting moisture.
500ml
19971



CALLUS REMOVER

Callus Softening Lotion for Removal: Effectively softens tough calluses, making removal easier, while deeply moisturizing & smoothing the skin for healthier feet.
200ml
19973



INTENSIVE HEEL REPAIR CREAM

Deeply Nourishing Foot Repair Cream: Softens calluses & rough skin, providing intense hydration to leave feet smooth, soft, & rejuvenated.
150ml
19972



PEDICURE KIT

A complete foot care system designed to cleanse, refresh, & nourish, leaving the feet feeling soft, smooth, & rejuvenated.

Kit Includes:
Hygiene Spray 250ml /
Revitalizing Spray 250ml
/ Foot & Leg Lotion
250ml / Foot Mask 250ml
/ Foot Scrub 250ml /
Foot Soak 250ml
19974



A new professional-only skin care range created by the skin care experts at Hive of Beauty. Includes a selection of skin rejuvenating sheet masks, anti-ageing serums & nourishing body care for the hands & feet.

A fully certified vegan range with sustainability in mind, using 100% plant origin ingredients. Effective formulas have that a maximized impact on the skin & a minimal impact on the Earth.

These treatments have taken inspiration from over 12 years of experience in the skin care industry to create new, enhanced formulas to transform the skin.

With sustainability at the forefront, the eco face sheet masks are plastic free & made from biodegradable, compostable bamboo. The serums come with recyclable glass bottles & pumps, in FSC approved cardboard boxes printed with vegetable ink.

+ maskology - Face & Eye Mask Treatments



Vitamin C Brightening Professional Facial Sheet Mask
A powerful formula born from Blueberry, Yuzu Citrus & Sea Buckthorn. Enhance the skin's hydration, elasticity & natural glow. Brightens the complexion, rebalances uneven skin tones, improves skin elasticity & reduces pigmentation.
19466



Hyaluronic Acid Hydrating Professional Facial Sheet Mask
Hydrates & nourishes the skin, resulting in moisturized, toned & youthful looking skin. Using the power of Soybean & Chamomile, the formula will hydrate & brighten the complexion.
19468



Squalane Nourishing Professional Facial Sheet Mask
Intensely hydrates, enriches & replenishes the skin for a youthful & energized complexion. Olive, Passionfruit, Organic Sweet Orange Oil & Organic Almond Oil create an anti-ageing formula that rejuvenates & soothes the skin.
19469



Retinol Anti-Ageing Professional Facial Sheet Mask
A powerful anti-ageing formula that uses the power of Seaweed Kelp Complex & Organic Pine Oil to boost the production of collagen, protecting the skin from damage & resulting in a youthful & healthy complexion.
19470



Niacinamide Blemish Control Professional Facial Sheet Mask
A blemish control formula that balances the skin, improves texture & prevents breakouts. Harnesses the power of Niacinamide, CICA & Chia Seed. Perfect for those struggling with acne or blemish-prone skin as it's packed full of vitamins & antioxidants to heal, soothe & protect the skin.
19471



Detoxifying Cleansing Professional Facial Cleansing Mask
A self-foaming & bubbling treatment formulated with Activated Charcoal, AHA, Lemon, Apple, Orange, Grapefruit & Ginseng. Micromassages the skin to provide a deep pore cleansing treatment. Detoxifies the skin, improves skin firmness, clarity, tone & elasticity.
19473



Retinol + Vitamin C Brightening Professional Under Eye Mask
The perfect solution to tired or ageing eyes. Brightens dark circles, improves the appearance of pigmentation & smoothes skin texture. Rich in Retinol, Vitamin B5, Vitamin C & Aloe Vera. Visibly reduces fine lines & wrinkles, while rejuvenating & energizing the area to maintain a youthful glow.
19471



Thermotherapy Relaxing Professional Heated Eye Mask
Soothes eyes by gently heating the area, allowing your client to sit back & reset. Scented with calming chamomile. Help your clients sink into a peaceful rest & take time to relax. A great choice for when their eyes feel tired, strained or have spent too much time looking at screens. The gentle warmth & rest this treatment provides will leave them feeling replenished.
19472



+ maskology - Hand & Feet Treatments

Hand Mask Hydrating Professional Hand Treatment Mask

The perfect solution to dry hands, especially for those winter months when the skin is more susceptible to dryness. Formulated with Fruit Extracts, Shea Butter, Argan Oil & Marine Collagen. Deeply nourishes & moisturizes the hands, leaving them feeling soft & supple.
19474



Foot Mask Nourishing Professional Foot Treatment Mask

The answer to dry or rough feet. The innovative dual-layered boots intensely hydrate & nourish the feet to leave them feeling soft, supple & replenished. Formulated with Fruit Extracts, Shea Butter, Argan Oil & Marine Collagen.
19476



Foot Peel Professional Foot Treatment Mask

A formula of 16 powerful botanicals & fruit extracts, Salicylic & Glycolic Acid that gradually removes rough & dead skin from the feet in just 7 days. The 90 minute treatment banishes hard, callused skin & helps to soften & smooth the feet.
19548



+ serumology

Vitamin C Brightening Professional Facial Serum

Enhance the skin's hydration, elasticity & natural glow. A powerful formula born from Blueberry, Yuzu Citrus & Sea Buckthorn. Enhances the skin's hydration, elasticity & natural glow.
30ml
19478



Hyaluronic Acid Hydrating Professional Facial Serum

Locks in moisture & provides the skin with deep nourishment. Using the power of Soybean & Chamomile, the formula will hydrate & brighten the complexion.
30ml
19479



Squalane Nourishing Professional Facial Serum

Intensely hydrates, enriches & replenishes the skin, resulting in a youthful & energized complexion. Harnesses the power of Olive, Passionfruit, Organic Sweet Orange Oil & Organic Almond Oil. An anti-ageing formula that rejuvenates & soothes the skin.
30ml
19480



Retinol Anti-Ageing Professional Facial Serum

A powerful anti-ageing formula that uses the power of Seaweed Kelp Complex & Organic Pine Oil to boost the production of collagen, protecting the skin from damage & resulting in a youthful & healthy complexion.
30ml
19481



Niacinamide Blemish Control Professional Facial Serum

A blemish control formula that balances the skin, improves texture & prevents breakouts. Harnessing the power of niacinamide, CICA & Chia Seed, this serum is the perfect choice for those struggling with acne or blemish prone skin as it's packed full of vitamins & antioxidants to soothe & protect the skin.
30ml
19482



Hand Serum Hydrating Professional Hand Care

Soothes & moisturizes dry, dehydrated hands with a fruity formula of Watermelon, Pomegranate, Kiwi & Organic Lime Oil. Perfect for winter when the skin can feel dry & damaged. This vitamin-rich formula will lock in moisture to hydrate the skin & keep it feeling supple & soft.
30ml
19682



Foot Serum Nourishing Professional Foot Care

A refreshing daily treatment for smooth, supple skin. This renewing formula uses AHAs & Enzymes to break down dead skin cells & rejuvenate the skin to leave the feet feeling softened and refreshed. Hydrates, soothes & protects the skin on the feet, effectively encouraging cellular renewal.
30ml
19477



The Kaeso ethos is to embody naturally derived ingredients with essential treatment formulas to deliver effective & luxurious professional products. Unique formulations that are made with the finest natural ingredients for the highest quality skin care.

The Kaeso collection meets all beauty treatment requirements, covering Beauty, Body, Manicure, Pedicure & Aromatherapy. Backed by extensive research & innovation, the development & expansion of Kaeso is carried out by industry experts that are highly trained within the beauty sector. Kaeso offers an array of specialized treatments to address individual preferences & the skin's changing needs. Within the extensive Kaeso collection, there is a fusion of natural products that maintain & restore your body, mind & well-being & allow you to create a simple & personalized regime to achieve great results.

Kaeso source proven & effective botanical extracts & are committed to choosing ingredients that are renowned for their true benefits to the skin. All Kaeso products are free from Parabens, Sulfates, Propylene Glycol & Mineral Oil.

Hydrating - Normal to Dry Skin

Hydrating Cleanser

- Effectively removes everyday grime & make-up.
- Benefiting from extracts of Cotton & Aloe Vera to moisturize, this formula will cleanse without drying the skin & leave it feeling soft & hydrated.

495ml
15417



Hydrating Toner

- Helps to revive, refresh, soothe, soften & moisturize the condition of skin.
- Cotton extract hydrates while Balm Mint & Acerola provide anti-oxidant properties which help to slow down skin ageing.
- Suitable for everyday use.
- Leaves skin looking & feeling revived.

495ml
15418



Hydrating Moisturiser

- Formulated to restore moisture to boost complexion & restore long-lasting moisture. For skin that feels softer, more supple & looks radiant & smoother.
- A natural antioxidant which benefits from Balm Mint.
- The hydrating properties work all day to nourish & hydrate the skin.

495ml
15419



Hydrating Facial Exfoliator

- Stimulates radiance-boosting microcirculation which replenishes moisture levels & eliminates dead skin cells to reveal fresh new skin.
- Benefits from Cotton & Aloe Vera which moisturize the skin.
- Helps to refine & smooth the complexion.

245ml
15420



Hydrating Facial Mask

- The specially formulated treatment restores moisture & rebalances dry skin. Nourishing & soothing, it softens & stimulates circulation.
- Benefits from extracts of natural antioxidant Balm Mint & Cotton, renowned for their hydrating properties.
- Moisturizes & leaves the skin feeling supple.

245ml
15421



Hydrating Gift Box

Nourishing range for normal to dry skin.

- Includes:
- 1 x Hydrating Mask, 95ml
 - 1 x Hydrating Exfoliator, 95ml
 - 1 x Hydrating Cleanser, 195ml
 - 1 x Hydrating Toner, 195ml
 - 1 x Hydrating Moisturiser, 195ml

15471



Calming - Sensitive Skin

Calming Cleanser

- A mild formula specially designed for sensitive skin to gently remove make-up & daily impurities to leave skin thoroughly cleansed & soothed.
- Contains Vitamin E, a powerful antioxidant which helps protect skin against the environment.
- Mulberry soothes & moisturizes while Pomegranate helps protect skin against UV damage caused by free radicals.
- Leaves skin looking & feeling refreshed & energized.

495ml
15422



Calming Toner

- Removes all traces of cleanser & daily impurities while clarifying the complexion without causing irritation.
- Benefits from extracts of Mulberry & Pomegranate to leave the skin looking fresh, supple & energized.

495ml
15423



Calming Moisturiser

- A light, fresh, rapid absorption cream which restores long-lasting moisture to skin. Specially formulated to nourish & rejuvenate sensitive skin.
- Benefiting from extracts of Mulberry & Pomegranate to soften, soothe & refresh.
- Suitable for daily use, this lightweight formula helps protect the skin & leaves it feeling nourished & hydrated.

495ml
15424



Calming Facial Exfoliator

- Gently & effectively exfoliates the skin while stimulating radiance-boosting microcirculation.
- Benefits from extracts of Aloe Vera to moisturize, Mulberry to help improve skin tone & Pomegranate to help protect skin against the environment.
- Leaves skin feeling soft with a youthful appearance.

245ml
15425



Calming Facial Mask

- Gently purifies skin without causing irritation for skin that feels softer, more supple & looks smoother.
- Benefits from extracts of White Nettle, known for its astringent properties & Chamomile to soothe the skin.
- Leaves skin soft & revitalized.

245ml
15426



Calming Gift Box

Delicate range for sensitive skin.

- Includes:
- 1 x Calming Mask, 95ml
 - 1 x Calming Exfoliator, 95ml
 - 1 x Calming Cleanser, 195ml
 - 1 x Calming Toner, 195ml
 - 1 x Calming Moisturiser, 195ml

15469



Rebalancing - Oily/Combination Skin
Rebalancing Cleanser

- Effectively removes buildup & make-up to leave skin thoroughly cleansed & soothed.
 - Contains extracts of Mallow & Cucumber to moisturize & soften the skin.
 - Witch Hazel helps to refine pores & reduce oiliness.
 - Skin is left soft, supple & shine-free.
- 495ml
15427



Rebalancing Toner

- Removes all traces of cleanser & daily impurities while clarifying the complexion without causing irritation.
 - Benefiting from Mallow & Cucumber, skin is left soft & moisturized.
 - Witch Hazel helps to refine pores & reduce oiliness.
 - Restores the balance of an oily complexion & helps clarify skin condition.
- 495ml
15428



Rebalancing Moisturiser

- A lightweight, fresh, & non-oily, easily-absorbed formula designed to balance skin moisture levels & control excess oil.
 - Extracts of Mallow & Cucumber help to moisturize & hydrate the skin.
 - Vitamin E helps to protect the skin against the environment.
 - Suitable for everyday use.
 - Leaves skin bright, revitalized & shine-free.
- 495ml
15429



Rebalancing Facial Exfoliator

- Microbeads work to buff away impurities & dead skin cells while gently polishing the skin's surface to boost the complexion & reveal healthier skin.
 - Extract of Mallow moisturizes while Coconut Oil helps skin conditioning.
 - Restores the balance of skin & leaves it looking bright & radiant.
- 245ml
15430



Rebalancing Facial Mask

- Formulated to reduce excess oil & remove impurities. A purifying, creamy, non-drying mask that refines & adapts to the needs of combination skin.
 - Extract of natural astringents, Willow Bark & Witch Hazel help to boost skin tone while moisturizing.
 - Helps to revitalize the complexion, leaving skin looking more radiant.
- 245ml
15431



Rebalancing Gift Box

- Moisturizing Range to tone Oily/Combination Skin Includes:
- 1 x Rebalancing Mask, 95ml
 - 1 x Rebalancing Exfoliator, 95ml
 - 1 x Rebalancing Cleanser, 195ml
 - 1 x Rebalancing Toner, 195ml
 - 1 x Rebalancing Moisturiser, 195ml
- 15470**



Firming Mask

- A luxurious, creamy face mask that helps to firm, tone & smooth the appearance of fine lines while nourishing & enhancing skin radiance for younger looking skin.
 - The added benefit of Pomegranate & White Nettle help to soothe, moisturize & improve skin tone.
 - Leaves skin feeling silky-smooth with a radiant glow.
- 95ml
15432



Pink Clay Mask

- Detoxifying clay mask that is perfect for cleansing, refining & detoxifying the skin for a renewed complexion.
 - Combats pore congestion, pigmentation & harmful environmental exposures.
 - Enriched with Pomegranate, Cocoa Butter & Jojoba Seed Oil.
 - Creates a healthy moisture balance on the skin.
 - Prevents the production of excessive oil & sebum.
- 95ml
16661



Anti Ageing Day Cream

- Halt the signs of ageing with this luxurious day cream.
 - Anti-ageing formula helps decrease the signs of ageing.
 - Reduces the appearance of fine lines & wrinkles.
 - Helps to boost collagen production to smooth & brighten dull skin.
- 95ml
15924



Skin Boost Collagen Gel

- Infused with Mulberry & Collagen to help improve skin tone & promote elasticity.
 - Ideal for use with non-surgical face lift machines.
- 250ml
15436



Regenerate Micro Current Gel

- Non-surgical face-lift gel designed to brighten, tone & firm the skin.
 - Ideal for use with non-surgical face lift machines.
- 250ml
15437



Elixir Facial Oil

- Offers intensive hydration as a rejuvenating night treatment or as a flawless base for make-up application.
 - Infused with natural extracts.
 - Features a unique blend of essential oils.
 - Replenishes moisture & restores radiance.
- 50ml
15438



Luxe Facial Serum

- Brightens & aids skin renewal, helping to restore radiance, replenish lost moisture & create a silky-smooth complexion.
 - Infused with natural extracts.
 - Easily absorbed.
 - Suitable for daily use.
- 50ml
15439



Purity Hot Cloth Cleanser

- Cleanses while helping to replenish moisture, leaving skin soft, soothed & revitalized.
- Gently & thoroughly removes dirt, impurities & stubborn make-up.
- Senses are left rejuvenated & uplifted.
- Thoroughly cleanses for silky smooth radiance.

*contains Propylene Glycol
195ml
15440



I Sparkle Eye Gel

- Cool, calming gel eases puffiness & dark shadows by decongesting, soothing & toning around the eyes for an instant uplift.
- Specially formulated with refreshing Witch Hazel & soothing Balm Mint to visibly improve the condition of the delicate eye area.
- Mallow Extract moisturizes the skin around the sensitive eye area.
- Conditioning Grapeseed Oil leaves lashes feeling silky-smooth & cared for.

30ml
15441



Eye Candy Eye Cream

- A luxuriously light formula to soften & rehydrate the delicate skin around the eyes to reduce the appearance of fine lines.
- Combines the ultra-moisturizing properties of Mallow & Vitamin E to leave the skin looking & feeling soft, smooth & supple.

30ml
15442



Eye Believe Make-Up Remover Oil

- Hydrating cleansing oil that moisturizes & removes make-up & waterproof mascara around the eye area without drying out the skin.
- Enriched with a blend of antioxidant & vitamin-rich ingredients, including cranberry, grapefruit & pomegranate. Leaves the skin feeling fresh, clean & moisturized.
- Removes stubborn eye make-up including waterproof mascara.
- Hydrating & highly moisturizing.
- Contains antioxidants to help reverse the signs of ageing.
- Invigorating fragrance.

195ml
15443



Anti Ageing Micellar Water

- This gentle & hydrating micellar formula draws out impurities without drying out the skin.
- Facial cleanser, make-up remover & moisturizer all in one product.
- Contains glycolic acid which has effective exfoliating properties.
- Helps to reduce facial lines, plumps the skin & boosts hydration levels.
- Improves the skin's surface condition, giving it a healthy, youthful glow.

195ml
15922



Anti Ageing Facial Serum

- Boost & repair with an anti-ageing facial serum.
- Works on the vital skin functions for visibly younger looking skin.
- Improves the complexion's radiance to give a healthy glow.
- Promotes oxygenation of skin cells & helps boost collagen production.

50ml
15923



Dusk Till Dawn Sleep Oil

- A replenishing night time facial oil that visibly restores the appearance of the skin.
- Contains plant extracts & essential oils including Evening Primrose, Jojoba & Lavender.
- Skin appears more toned & has improved radiance.
- Helps you unwind before sleep & has great benefits for the skin.

50ml
15925



Replenishing Radiance Booster Drops

- Replenish & renew ageing skin to reveal a more hydrated, glowing complexion.
- Concentrated radiance booster drops designed to boost collagen production & support skin renewal.
- Visibly hydrates the skin & reduces wrinkles.
- Use with Kaeso Anti Ageing Day Cream to help decrease the signs of ageing.

30ml
15926



Brightening Vitamin C Booster Drops

- Glow from within with brightening drops, formulated to awaken dull, tired skin.
- Infused with Vitamin C to help revive dull, tired complexions.
- Gives skin a smooth finish & healthy looking glow.
- Use with Kaeso Anti Ageing Day Cream to help decrease the signs of ageing.

30ml
15927



No Rinse Hand Cleanser

- Kills 99.99% of germs.
- Infused with a blend of essential oils, including Bergamot & Lemongrass. Quick-drying, moisturizing formula gently cleans & protects skin from germs.

500ml
16454



Anti-Bacterial Hand Wash

- Cleans & refreshes hard-working hands. Infused with a luxurious blend of essential oils, including Bergamot & Lemongrass. Removes bacteria & germs, while soothing & protecting the skin.

250ml
16455



Refreshing Hygiene Spray

- Perfect for preparing the skin before any treatment. Anti-bacterial formula sanitizes the skin to prevent possible infection or irritation. Infused with a luxurious blend of essential oils, including Bergamot & Lemongrass.

250ml
16456



28 Years of Anti-Aging Innovation
 Pharmagel is dedicated to the philosophy of producing
THE FINEST QUALITY, SUPER-PERFORMING FORMULATIONS
 FOR SKIN TREATMENT PRODUCTS DEDICATED TO THE SALON
 PROFESSIONAL
 guaranteeing quality & commitment

repair | prevent | reverse

Repair Skin Damage | Prevent Skin Damage
| Reverse The Ageing Process

Why Stock, Use & Sell Pharmagel®?

- * Simple range for all skin types
- * Easy to learn & understand
- * Highest quality, natural botanicals & vitamins for the discerning customer
- * Retail & professional sizes

NOURISH CLEANSE™ FACIAL CLEANSER

- Cleanses & hydrates, restores youthful glow with 8 exotic oils (Argan, Marula, Rosemary Leaf, Cranberry Seed, Moringa, Geranium, Sunflower & Safflower).
- Glides across skin to soften & nourish dull, dehydrated complexions.
- Fatty acids hydrate skin & work together to dissolve dirt, debris & make-up to leave skin soft & silky.
- Can be used morning & evening as a gentle cleanser by massaging into skin for up to 3 minutes.
- Improves elasticity, protects against sun damage, fights aging & acne, minimizes inflammation & improves glow & inflammation.

110ml
13936



AGE DEFYING EXFOLIATION

ENZYMÉ EX-CELL® FACIAL SCRUB

A gentle, exfoliating facial scrub with extracts from the papaya plant. Polishing grains from walnuts combined with enzymes to gently exfoliate skin. Allantoin refreshes exfoliated skin so that even sensitive skin will benefit. Excellent pre-shave treatment for a smooth, close shave.

170g **13308**
 510g **13309**
 (Includes a FREE 170g retail size)



AGE DEFYING MASQUES

NUTRA-LIFT® FACIAL FIRMING MASQUE

A quick-drying, facial-firming, kaolin clay-based masque containing vitamins & humectants that help skin appear lifted & smoothed.

170g **13310**
 510g **13311**
 (Includes a FREE 170g retail size)



NOURISH CLEANSE™ DISPLAY

Branded display to show off the Nourish Cleanse range. Illustrates benefits & features of range for retail purposes. Includes 6 x Nourish Cleanse.

14030



AGE DEFYING CLEANSERS

HYDRA CLEANSE®

A mild botanical-based cream cleanser formulated with Oat Extract & Panthenol. Water-rinseable & pH-balanced, all skin types.

5ml sample **13291**
 89ml **13300**
 230ml **13301**
 946ml **13302**
 (Includes a FREE 230ml retail size)



FLEUR-5 PLUS®

Moisturizing cleansing bar for face & body. Botanicals of Green Tea & Ginseng to hydrate & cleanse. Colloidal Oatmeal helps restore lost moisture, will not strip or dry skin. Low pH.

23g **13518**
 150g **13303**



BOTANICAL TONIQUE® FACIAL TONER

A moisturizing facial toner helps keep skin hydrated. Botanical extracts help skin appear firmer & pores tighter. Men may use after shaving to refresh skin. Alcohol-free.

89ml **13304**
 946ml **13306**
 (Includes a FREE 230ml retail size)



AGE DEFYING FACE & BODY MOISTURIZERS

FIRMA DERM® FACE & BODY MOISTURIZER

An intense, age-defying moisturizing face & body lotion with Aloe Vera. For use after bathing for face or entire body. Contains Echinacea, Ginkgo Biloba & Golden Seal. 4g sample **13292**
88ml **13321**



HYDR02XY-10® MOISTURIZER

A 10% AHA/BHA moisturizing lotion concentrate for face & body. Contains both Glycolic Acid & Salicylic Acid (BHA). BHA works as an exfoliator to help skin look rejuvenated. Also contains stabilized oxygen for rapid absorption to help skin appear revitalized. 230ml **13323**



GLYCO-8® FACIAL MOISTURIZER

A triple-performing AHA (Alpha Hydroxy Acid) moisturizer with Glycolic Acid, Vitamins A & E & stabilized Vitamin C. Exfoliates to help skin appear firmer & more radiant. Through a crème base with Glycolic Acid, dead skin cells are gently swept away, allowing skin to look healthy & vibrant. Glycolic Acid is an ingredient found in sugar cane that helps reduce the appearance of the effects of environmental stressors. 8% AHA for combination skin. 4g sample **13317**
56g **13318**



AGE DEFYING EYE CARE

EYE BEAUTÉ®

A unique, herbal solution in pad form that relieves the appearance of puffy, swollen eyes often associated with aging. Fragrance-free, oil-free & hypoallergenic. 60 pads **13324**



KITS & ACCESSORIES

DAILY EXPRESS REGIMEN TRAVEL KIT

Includes:
- 1x Hydra Cleanse, 89ml
- 1x Facial Scrub, 85g
- 1x Botanical Tonic, 89ml
- 1x Firma Derm, 88ml **13128**



Goodie Bag (Empty) **14087**



AGE DEFYING SPECIALTY PRODUCTS

SLENDER SHAPER®

A body reshaping & contouring treatment that contains mineral-rich algae, Alpha Lipoic Acid, DMAE & high potency herbal ingredients. Flavonol-rich red clover along with green tea & cocoa stimulates the skin to help smooth the appearance of body contours. Absorbs quickly & easily resulting in a smoother looking body, silkier skin & a reduction in the appearance of cellulite. 250ml **13331**
946ml **13332**
(includes a FREE 250ml retail size)



LIP RECOVERY® PROTECTANT

Contains a blend of humectants & peptides to intensively hydrate & help to reduce vertical lines & wrinkles to improve lip shape & fullness. Contains Aloe Vera, Shea Butter & Coconut Palm conditioners. 15ml **13334**



SHOWER POLISH™ BODY POLISH

A luxurious, exfoliating body wash. Contains Tahitian black sand & algae. The fine grains of this natural volcanic polish, sourced from the South Pacific island nation of Vanuatu, gently exfoliates dull, dry skin. 250ml **13339**



The vision for arcaya is to offer the perfect skin care routine for women of every age, anywhere around the world. For this reason, the products have been designed as problem-solvers & targeted skin care for special needs. Fast & perfect efficacy achieved through a high concentration of active ingredients is an especially high priority. The holistic product range not only meets all daily skin care needs, but goes a step further to perfect consumers' skin care routines by making ampoules a part of them.

- Active ingredient ampoules are beauty secrets & solutions in a glass.
- Simplifying skin care, arcaya ampoules provide better, more intensive & effective skin care solutions.
- The small size of the ampoules forces the solutions to be as intensive & concentrated as possible.

- Right from the first use, you will notice nothing delivers results as intensive as ampoules.
- arcaya guarantees unique variety, quality & efficacy through paramedical ingredients.
- To open: shake well & gently tap the top of the ampoule to make the fluid flow to the bottom. To protect hands, place tissue or towel around ampoule. Snap the top of ampoule off backwards at the break ring. **DO NOT** open ampoule with bare hands.
- Cleanse face, apply desired amount to hands, transfer to face & gently massage into the skin. Cream can be applied after.
- Fluid should be used within two days of opening.
- One use will give extra beauty boost but a ten ampoule use over 2-3 weeks provides the best results.
- Made in Germany.

Ampoules (5 x 2ml) - Hydration & Fine Pores

Hyaluron Plus - Wrinkle refill

This exceptional ampoule has a long-term effect on dry, demanding skin. Hyaluronic acid, a well-known active agent in facial anti-wrinkle injections, forms a unique link with the keratin in the stratum corneum, stores moisture & prevents loss of fluids. This enables rapid & sustained firming of the skin, optically "filling in" wrinkles & lines for immediately visible success.

KEY INGREDIENTS:
Hyaluronic acid - deeply moisturizing & smoothing
14353



Cashmere Feeling - The most gentle ampoule for a fine-pored appearance

For special beauty rituals: envelops the skin in a gentle, protective cloak immediately after application without a greasy or sticky feeling. Visibly & perceptibly smooths & has an exceptionally relaxing effect. The delicate, protective mantle begins working immediately. The complexion appears fine-pored & soft. Increases the skin's hydration level & gives the complexion an unparalleled silky feeling.

KEY INGREDIENTS:
Silk proteins, Keratin - smoothing, pore-refining
Hyaluron - moisturizing
15688



Energy Active - Moisture Flash & Energy Booster

This super high-tech ampoule recharges the skin's natural batteries. The skin is instantly hydrated & immediately appears fresh. The energy boost can be seen & felt right away. All signs of tiredness vanish. The first signs of wrinkles & fine lines are effectively inhibited.

KEY INGREDIENTS:
Taurin - activating, refreshing
Hyaluron, Pullulan - instant strengthening
14735



Multi Vitamin - Immune protection & natural anti-aging

Perfectly combined vitamin complex with A, C, & E- as well as F & B6, for intensive immune protection of the skin. This delightful fruity ampoule strengthens the immune system & brings with it instant well-being & perfect freshness. Naturally pure vitamins stabilize the cells & function as effective radical scavengers. The skin's resilience is significantly increased. Well-being of the skin is maximized - even many days after application.

KEY INGREDIENTS:
Vitamin B5, B6, A-C-E - anti free-radical effect
Elastin - smoothing
15689



Aloe Vera - Works powerfully against all types of skin damage

Immediately balances out all traces of dryness & tight-feeling skin. Has an intensively soothing effect & promotes the skin's natural protection mechanism. The 100% natural aloe extract is rich in vitamins & minerals. Even demanding skin receives all nourishing elements it needs for true beauty. The successful cell & skin regeneration effect is particularly noticeable on skin that is uneven in structure, scarred or suffers from impurities. "First aid" for sunburn or for regeneration after exposure to the sun.

KEY INGREDIENTS:
Aloe vera juice - deep moisturizing, immediate help for red skin
14359



Beauty Day - Burst of freshness & protection for the skin

For a radiant & perfect experience & fresh-looking skin. This effective active ingredient concentrate gives any type of skin a visible burst of freshness for a radiant, healthy look. Carotin with vitamin A & natural lipids support the skin's regenerative abilities & leave it feeling noticeably refreshed & perfectly radiant. The ampoule is the ideal choice to protect the skin against the effects of the weather. Recommended for skin that looks sallow, weak or creased.

KEY INGREDIENTS:
Beta carotene, Avocado oil - fresh appearance
Hyaluron - moisturizing, smoothing
15690



Ampoules (5 x 2ml) - Anti-Spot & Detox

Milk & Honey - Powerful treatment for skin impurities

An anti-bacterial, cooling ampoule that helps to alleviate impurities & redness. Natural yet especially intensive treatment for all symptoms of impure skin. Inflammation is lastingly alleviated thanks to the antibacterial & cooling effect. The acid mantle is restored to its natural state, cutting off the supply of nutrients for bacteria. Selected plant extracts promote healing of pimples & prevent formation of scaly skin.

KEY INGREDIENTS:

Lactic acid, honey, mahonia extract, ribwort extract, salicylic acid - bactericidal, supports healing

15691



Crystal - Purity & firming

Crystal beauty ampoules have a firming effect & can immediately erase signs of aging. Derived from the field of gemstone therapy, the active ingredient extract consists of pure quartz crystals in powdered format, suspended in a moisturizing medium. Quartz is made primarily of silicon, a trace element that plays an established biological role in retaining the firmness of the skin. All traces of tiredness & reduced elasticity can be systematically erased, bringing out the skin's natural radiance. This ampoule is also ideal for skin impurities after puberty.

KEY INGREDIENTS:

Rock crystal extract - strengthening Silica - purifying

15692



Oxygen - Unveiling of youthful freshness

Increases supply of oxygen to the skin, promotes formation of new cells. Ideal for pale, grayish skin or skin under stress from environmental influences. Smoothing ampoule concentrate for instant perfecting of the complexion. The complexion immediately appears fresher & more relaxed. Precious elements in the active ingredients increase the supply of oxygen to the skin, enabling increased formation of new cells. Uneven areas are smoothed out & shiny skin is matted. The 24-hour moisture supply corrects fine lines & leaves the skin smooth & refined. Ideal for treating the visible effects of an unhealthy lifestyle.

KEY INGREDIENTS: Perfluorodecalin (polyperfluoroethoxymethoxy difluoroethyl, PEG phosphate) - Oxygen-Booster, 24h hydrating

14363



Matt2Go - Mattifying & Pore-Refining

With tea tree oil for blemished, oily skin prone to breakouts. Tea tree oil has antibacterial & anti-inflammatory effects. Prevents peeling of the top layer of skin. Australian finger lime extract smooths the skin, refining pores, & leaving the skin silky soft with a luminous glow. Hyaluron moisturizes all the layers of the skin, regenerating deficiencies & filling in fine lines. Lactic acid ensures the skin's natural protective acid mantle stays healthy, eliminating any breeding ground for bacteria. Salicylic acid has an anti-bacterial & astringent effect. **KEY INGREDIENTS:** Tea tree oil, Australian finger lime, serine, triple hyaluronic acid.

16814



Ampoules (3 x 2ml) - Limited Edition

Aloha Edition

Celebrate summer with this moisturizing & lifting selection of ampoules for instant results.

Includes:

- 1x Hyaluron Plus
- 1x Energy Active
- 1x Quick Lift

16819



Glow Tonight

Selection of luxurious ampoules for hydration, anti-aging & glowing skin.

Includes:

- 1x Hyaluron Plus
- 1x Golden Repair
- 1x Glow2Go

17456



Nature Vibes

A fresh, healthy & natural skin care routine. Specializes in better moisture, natural skin protection & active anti-aging. Time for skin full of antioxidants, vitamins & healthy lipids.

Includes:

- 1x Hemp & Olive
- 1x Aloe Vera
- 1x Vitamin C

16818



Ampoules (5 x 2ml) - Anti-Spot & Detox

Milk & Honey - Powerful treatment for skin impurities

An anti-bacterial, cooling ampoule that helps to alleviate impurities & redness. Natural yet especially intensive treatment for all symptoms of impure skin. Inflammation is lastingly alleviated thanks to the antibacterial & cooling effect. The acid mantle is restored to its natural state, cutting off the supply of nutrients for bacteria. Selected plant extracts promote healing of pimples & prevent formation of scaly skin. **KEY INGREDIENTS:** Lactic acid, honey, mahonia extract, ribwort extract, salicylic acid - bactericidal, supports healing
15691



Crystal - Purity & firming

Crystal beauty ampoules have a firming effect & can immediately erase signs of aging. Derived from the field of gemstone therapy, the active ingredient extract consists of pure quartz crystals in powdered format, suspended in a moisturizing medium. Quartz is made primarily of silicon, a trace element that plays an established biological role in retaining the firmness of the skin. All traces of tiredness & reduced elasticity can be systematically erased, bringing out the skin's natural radiance. This ampoule is also ideal for skin impurities after puberty. **KEY INGREDIENTS:** Rock crystal extract - strengthening; Silica - purifying
15692



Oxygen - Unveiling of youthful freshness

Increases supply of oxygen to the skin, promotes formation of new cells. Ideal for pale, grayish skin or skin under stress from environmental influences. For instant perfecting of the complexion, which is left fresher & more relaxed. Uneven areas are smoothed out & shiny skin is matted. 24-hour moisture supply corrects fine lines & leaves the skin smooth & refined. Ideal for treating the visible effects of an unhealthy lifestyle. **KEY INGREDIENTS:** Perfluorodecalin (polyperfluoroethoxymethoxy difluoroethyl, PEG phosphate) - Oxygen-Booster, 24h hydrating
14363



Matt2Go - Mattifying & Pore-Refining

With tea tree oil for blemished, oily skin prone to breakouts. Tea tree oil has antibacterial & anti-inflammatory effects. Prevents peeling of the top layer of skin. Australian finger lime extract smooths the skin, refining pores, & leaving the skin silky soft with a luminous glow. Hyaluron moisturizes all the layers of the skin, regenerating deficiencies & filling in fine lines. Lactic & Salicylic acids ensure the skin's natural protective acid mantle stays healthy, eliminating any breeding ground for bacteria. **KEY INGREDIENTS:** Tea tree oil, Australian finger lime, serine, triple hyaluronic acid.
16814



Ampoules (5 x 2ml) - Last Minute Effect & Specials

Quick Lift: Turbo smoothing with algae extract.

Highly concentrated beauty serum, developed for immediately tangible lifting of the facial contours. This instant beauty-maker is especially effective for combating wrinkles & dry skin. Natural sea algae proteins moisturize all the skin layers & ensure a fresh & radiant complexion. The skin immediately looks firmer. Intensive irritation-alleviating plant extracts eliminate all redness & irritations. **KEY INGREDIENTS:** Atlantic green seaweed extract (codium tomentosum).
14365



White Vision: Lightening, regenerating & beautifying - for a flawless complexion.

Precious active ingredient ampoule with whitening effect for hyper-pigmentation, age spots & pigmentation marks. With simultaneous regeneration effect. Natural extracts from daisy flowers, reinforced with Vitamin C, support the transition to a lighter complexion while at the same time keeping the skin tone even. Regenerating active ingredients improve the structure of the skin while reducing visible signs of aging. Ideal for lightening hyper-pigmentation or pigmentation marks of all kinds. **KEY INGREDIENTS:** Daisy flower extract, Vitamin C, Niacinamide (Vitamin B3) - Anti-pigment effect.
14364



Hemp & Olive - Relaxing & vitalizing care for sensitive skin.

A vitalizing two-phase ampoule with hemp & olive oil. Hemp oil is a true beauty elixir for a flawless complexion, leaving even sensitive & dry skin soft & smooth. Olive oil is highly nourishing & anti-bacterial, helping to repair skin dryness. Olive oils fatty acids closely resemble the skin's own lipids & are able to store moisture. Vitamin E is an important antioxidant that protects & nourishes the skin. Sesame oil, containing Vitamins A & E, encourages cellular growth & slows down the aging of skin cells, perfect for skin with poor circulation. **KEY INGREDIENTS:** Hemp seed oil (omega 3-6), olive oil (omega 9), sesame oil, jojoba oil, algae extract.
16815



Jasmine - Nutrient-rich plant power for skin & soul.

Ampoule treatment for skin that looks & feels perfectly flawless. Nourishing jasmine oil harmonizes the skin, restoring natural balance & stimulating immune resistance. Soothing & integral skin care for a sense of pure well-being. Beneficial, highly effective ingredients facilitate the skin's natural regeneration processes, lock in moisture & strengthen the antioxidative protective complex. Ideal for dry, mature & irritated skin. Very useful for treating pigmentation marks. **KEY INGREDIENTS:** Jasmine flower oil - regenerating, moisturizing, Vitamin C - strengthening, brightening.
14360



Ampoules (5 x 2ml) - Anti Ageing & Firming

Lotus - Traditional care for invigorating the skin

Ampoule with a stimulating yet simultaneously relaxing effect. Leaves the skin feeling especially smooth. This intensive, revitalizing ampoule with lotus extract has been developed specifically to make the complexion appear firmer & younger. Demanding skin permits no compromises. Lotus extract is the secret ingredient of traditional beauty treatments in Myanmar. The stimulating floral aroma will immerse you in the magic of traditional care rituals as you bask in a sensation of pure wellness. The addition of natural collagen effectively combats wrinkles.

KEY INGREDIENTS:

Lotus extract, Collagen - stimulating, smoothing, firming

15363



Vitamin C - Collagen booster & anti-pigment

Rapid assistance for combating wrinkle formation, reduced elasticity & hyper-pigmentation. Ampoule with a highly sensitive pure Vitamin C derivative that is transformed into Vitamin C by the skin's own enzymes after application. Only in this way Vitamin C is able to take effect in the deeper layers of skin. Vitamin C has outstanding collagen synthesizing properties, i.e. promoting the regeneration of elastic collagen fibers. Vitamin C has a superlative lightening effect, intensifying the skin's luminosity & lending it a porcelain-like shimmer.

KEY INGREDIENTS:

Ascorbic acid (pure Vitamin C) - collagen synthesis
Lemon oil - lightening effect

14357



Platinum - Youth Code & Contour Control

The ultimate regenerative ampoules for increasing the cells' natural ability to repair themselves. Firming ampoules with a timeless effect for systematically combating reduced elasticity in skin tissue. Highly effective, nourishing ingredients improve the skin's elasticity & promote cohesion of the cells & skin layers. The contours of the face immediately become firmer, suppler & more elastic. Especially effective for treating reduced elasticity in the skin of the face, chin, neck, décolleté & breasts.

KEY INGREDIENTS:

Peptides, white agaric stem cell extract - firming, renewing

14362



Anti Age - Turbo regeneration

Increased strength & firmness for mature skin. Ultra-concentrated anti-wrinkle serum for a firming & cell regenerating effect in the deeper layers of skin. Biological peptides strengthen the collagen layer & promote the skin's elasticity. A phytohormone complex noticeably firms dermal tissue for verifiable reduction of wrinkles.

KEY INGREDIENTS:

Palmitoyl pentapeptide-4 (matrixyl), enteromorpha compressa algae extract - collagen booster, smoothing

15696



ResQ10 - Cell-protecting coenzyme Q10 for a perfect complexion

Visible smoothing & nourishment for mature, dry & stressed skin. Highly concentrated luxury ampoule for a perfect complexion & targeted anti-aging. Can visibly increase cell volume. Q10 provides intensive protection for the cells, activates stressed, tired skin & promotes cell regeneration. The plumping effect works to visibly smooth fine lines. Q10 is a well-known antioxidant that can have an impact on the aging process.

KEY INGREDIENTS:

Coenzyme Q10 - antioxidant, which can influence the aging process
Cotton flower stem cells extract - calming effect

15364



Collagen Plus - Effective firming

Turbo beauty ampoule with fresh, pure collagen. This ampoule creates a cushioning, firming film directly on the surface structure, making the skin contour appear smoother & younger. The skin's ability to absorb water is perfectly restored at the same time. This ampoule is particularly effective when the skin has become wrinkled due to external influences, such as cold & dehydration or exposure to the sun.

KEY INGREDIENTS:

Soluble, 100% natural (marine) collagen - firming, smoothing

14354



Spa Vitality - anti-aging & detox

2-phase massage ampoule with anti-aging & detox effect. Nutrient-rich plant power for skin & soul. An anti-aging multi-talent with reishi mushroom, wild orange oil & unparalleled wellness effect.

Guarantees soothing & holistic skin care for a sense of pure wellbeing. Reishi mushroom is a true anti-aging multi-talent: The polysaccharides it contains can regulate the skin's moisture balance & are of crucial importance to cellular renewal processes. The skin instantly looks firmer & smoother. With its antioxidant properties, reishi mushroom protects skin cells against free radicals & stimulates natural cellular renewal. Wild orange oil ensures pure relaxation & a pleasant spa experience. This oil is especially popular in aromatherapy - it has a refreshing, revitalizing effect & lifts the mood.

Tip: Be sure to use it during the dark winter months, too!

19664



Elastin Age Stop - Maximum effect for increased elasticity of skin tissue

Alleviates wrinkles & restores the skin's natural elasticity. Also suitable for rapid lifting care when quickly needed. This ampoule serum was developed to reduce wrinkles & restore elasticity while providing optimum nutrients for demanding, tired skin. Elasticity is rapidly increased & the surface structure of the skin is smoothed. Pomegranate extract provides intensive regeneration.

KEY INGREDIENTS:

Elastin - reduces wrinkles & gives skin new elasticity
Pomegranate extract - regeneration effect

16163



Ampoules (5 x 2ml) - Regeneration

Stem Cell Actives - Regeneration & new elasticity

This strong ampoule concentrate offers an all-new combination of regenerative elements & stem cell extracts from the alpine rose. The bio-active stem cells of the alpine rose provide intensive protection & lengthen the cellular lifecycle. Wrinkles & fine lines appear plumped up from the inside, facial contours are instantly firmer. Immediately following application, the skin appears as if in soft focus & radiates youthful freshness.

KEY INGREDIENTS:

Stem cell extract from the alpine rose - regenerating
Rose oil, panthenol - soothing

14367



Primrose Oil - Moisture Storage

Intense ampoule for dry, sensitive skin prone to inflammation & irritation. Evening primrose oil contains many essential fatty acids such as anti-inflammatory linoleic acid, which has a positive effect on skin moisture & complexion. Mild almond oil cares for dry skin & makes it smoother. Since almond oil is very similar to the skin's own lipids, it is quickly absorbed without clogging the pores, making it particularly suitable for dry & scaly skin. Quality, quick-absorbing, well-tolerated grapeseed oil supports the skin with its anti-inflammatory properties. Other quality vegetable oils derived from olive, avocado, jojoba & sunflower provide additional nourishment. Vitamin E protects & renews the skin thanks to its antioxidant effect.

KEY INGREDIENTS: Primrose oil, almond oil, grapeseed oil, olive oil, avocado oil, jojoba oil, sunflower oil.

18282



Best Caviar - Intensive regeneration

Targeted treatment for demanding, mature skin, skin in need of strengthening & skin in need of pampering. The skin immediately appears fresher. The extract of 100% pure live cell caviar, rich in proteins, lipids & vitamins, supports the skin's microcirculation, promotes cell regeneration, increases the skin's ability to absorb water & smooths wrinkles. The structure of the skin is strengthened at the same time, making the facial contours appear firmer & tauter.

KEY INGREDIENTS:

Caviar extract, green bean seed extract - regenerating

14355



AHA Skin Perfect - Revitalizing

AHA fruit acid ampoule for radiant, even, smooth skin. The fruit acids in the AHA Skin Perfect ampoule take effect in the uppermost layer of the skin where they dissolve dead skin cells & free the skin of buildup. The result is pore-deep cleansed skin & a refined complexion. Uneven patches in the complexion are smoothed out. The body's own cell & collagen production is stimulated by the gentle combination of natural fruit acid & salicylic acid. The skin is regenerated & smoothed. In addition, the skin cells are strengthened & protected by the many antioxidants contained in the blueberry & grape extract.

KEY INGREDIENTS: AHA fruit acids (tartaric acid, malic acid, citric acid, lactic acid, glycolic acid - from sugarcane extract) 7%, Salicylic acid (BHA fruit acid)

Grape extract, Blueberry extract.

18644



Golden Repair - Non-Stop Lifting

Energy-releasing ampoule concentrate with a unique lifting effect. Harmonizes & balances, giving the skin new radiance & freshness. Gold boosts the intercellular metabolism, releases new energy & creates a radiant appearance. Caviar & a rich repair complex pamper the skin with optimum nourishment. Demanding skin becomes supple, radiant & fresh.

KEY INGREDIENTS:

Gold - stimulates cell regeneration
Caviar extract, willow bark extract, peptides - soothing

15697



Ampoules (5 x 2ml) - Eyes & Lips

Eye Sensitive - Express eye care

Relieves puffiness, reduces dark circles & redness & soothes strain caused by contact lens use. Fast-acting eye care that immediately leaves skin around the eye area looking radiantly beautiful. The new micro-texture revitalizes & smooths while reducing swelling at the same time. Dark circles & small lines are instantly minimized & tired-looking eyes become brighter. The delicate eye zone receives a generous supply of moisture, providing effective protection for the sensitive eye zone. **KEY INGREDIENTS:** Eyebright extract - soothing, against dark eye circles; Green tea extract - soothing; Hyaluron - wrinkle refill

15694



Recommendation for treatment

Our ampoules already show the best possible effectiveness with manual application. In combination with synergistic treatment, the desired synergy effect can be achieved.

	Texture	Hydration	Anti spot & delox	Anti ageing	Fine pores	Slow ageing	Anti pigment	Firming	Anti redness	Last minute effect	Iontophorèse	Laser	Ultrasound	Meso/cosmetic mesotherapy non invasive	Oxygen
Aloe Vera	💧	***	**	*		*			***	***	pos	YES	YES	YES	YES
Anti Age	💧	**		***		*		**		**	pos	YES	YES	YES	YES
Beauty Day	💧	*		***	*			***		*	pos	YES	YES		YES
Beauty Express	💧	***		*		**		*		***	pos	YES	YES	YES	YES
Beauty Sleep	💧	*		**		***		**	**	***	pos	YES	YES	YES	YES
Best Caviar	💧	*		***		**		***	*	**	pos	YES	YES	YES	YES
Cashmere Feeling	💧	***	*	**	***	**		*		***	pos	YES	YES	YES	YES
Collagen Plus	💧	**		***	*	*		***	**	*	pos	YES	YES	YES	YES
Crystal	💧	**	***	**	**	**		***	***	**	pos	YES	YES		YES
Elastin Age Stop	💧	**	*	**		*		***	*		pos	YES	YES	YES	YES
Energy Active	💧	***	*	***		***		*		***	neg	YES	YES	YES	YES
Eye Repair	💧	***		***		**		***		***	pos	YES	YES		YES
Eye Sensitive	💧	***	*	*				*	***	***	neg	YES	YES		YES
Glow2Go	💧	***			**	**	*			***	pos	YES	YES		YES
Golden Repair	💧	**		***				***	*	*	pos		YES	YES	YES
Hemp & Olive	💧	***	**	**	*	***		**		**	pos	YES	YES		YES
Hyaluron Plus	💧	***		***		***		**	*	***	pos	YES	YES	YES	YES
Jasmine	💧	*		**		**		***				YES	YES		YES
Mat2Go	💧	***	***		***			**	**	**	neg/pos	YES	YES	YES	YES
Milk & Honey	💧	**	***		***	*		***	**	**	neg/pos	YES	YES	YES	YES
Multi Vitamin	💧	*		**		*		*	*	***	pos	YES	YES	YES	YES
Oxygen	💧	*		**		*		***		**	neg	YES	YES	YES	YES
Platinum	💧	**		***		***		**	***	***	pos	YES	YES	YES	YES
Quick Lift	💧	*	**	**	*	**		*	**	*	pos	YES	YES	YES	YES
ResQ10	💧	**	**	***	*	*		**		*	pos	YES	YES	YES	YES
Retinol Avocado	💧	*	*		**			*		***		YES	YES		YES
screenage Eye Contour	💧	***	***	***	*	**	***	**	***	*	neg	YES	YES		YES
screenage Repair Actives	💧	***	***	***	*	**	***	**	***	*	neg	YES	YES	YES	YES
SOS Extreme	💧	*		***	**	*		**		*	neg/pos	YES	YES	YES	YES
Stem Cell Actives	💧	**		***		**		*	**		pos	YES	YES	YES	YES
Super Sensitive	💧	***	**						***	***	pos	YES	YES		YES
Viper	💧	*		***		**		***		***	pos	YES	YES	YES	YES
Vitamin C	💧	*	**	***	***	**	**	***	*	**	pos	YES	YES	YES	YES
Volume Lips	💧	***		***		***		**		***		YES	YES		YES
White Vision	💧	*	*	**	*		***	**			pos	YES	YES	YES	YES

*** 3 points = very good effect | ** 2 points = good effect | * 1 point = minimal effect | No points = no effect

Starters

Cleansing system with products ranging from tonic to an exfoliator for targeted, in-depth cleansing. The complexion is cleansed & refined. The skin can breathe again & is ideally prepared to absorb the nourishing active ingredients in subsequent products.

Tonic Caresse

Much more than a toner - leaves the skin feeling simply fantastic

This toning skin drink with aloe vera gel is as refreshing as a waterfall. The crowning finish to cleansing, it quenches the skin's thirst for moisture & leaves it perfectly smooth. The loving care that skin craves each day. Redness & irritations are instantly alleviated. The result is skin that feels better than ever before - perfectly well cared-for with no signs of dryness. Absolute balance for stressed skin. **USE:** Shake briefly before use. Pour a few drops onto a cotton pad & dab it onto the skin & neck. Then apply moisturizer.

KEY INGREDIENTS: Mont Blanc glacier water, rich in minerals, aloe vera juice, lime & geranium oil.

200ml **15701**
500ml **16811**
(with pump)



Tonic Vital

Micellar facial toner for deep cleansing with herbal extracts

Refreshing & clarifying micellar facial toner for normal skin, mixed skin & oily, blemished skin. Leaves the skin's natural, protective barrier intact for fine-pored, smooth & matte skin. Herbal extracts balance & refresh the skin while also helping to preserve moisture.

USE: Apply evenly with a cotton pad & gently massage into skin, do not rinse off.

KEY INGREDIENTS: Herbal extracts from tiger grass, ginkgo, ginseng & green tea.
200ml **15702**
500ml **16812**
(with pump)



Derma Scrub

BETTER Formula - NEW Packaging. Reformulated so that the pebble granules no longer sink to the bottom! It is now a homogeneous gel-based peeling. Especially mild facial peeling with diatomaceous earth. The skin is left smooth & with ultra-fine pores, with these effects lasting many days.

USE: After cleansing the skin, apply a few drops to the face, neck & décolleté & distribute with gentle circular movements. Rinse thoroughly afterwards.

KEY INGREDIENTS: Wash-active substances, Aloe Vera, Diatomaceous Earth, Chamomile Flower Extract, Tiger Grass Extract.
75ml **18643**



Amber Peeling

Facial peeling with amber extract

Exceptional facial peeling rub with real amber extract. Removes excess buildup of dead cells, cleanses & peels the skin. The stratum corneum is the outermost visible layer of skin. Its composition affects how we look, how our skin feels & quality of the skin structure. Exfoliation removes dead cells & impurities, exposing healthy, young skin. The result is clean, smooth, radiant skin. Natural vitamin oils restore the skin's natural balance.

USE: Dab a small amount on the skin & gently massage in, especially in the T-zone. Avoid the eye area entirely. Remove excess with damp washcloth or sponge & then apply moisturizer. For dry or sensitive skin, the peeling can be left on up to 10 minutes before scrub.

KEY INGREDIENTS: Amber extract, apricot kernel granules, avocado oil.
100ml **15704**



Derma Pro

Unique biological enzyme purification for all skin types

Excessive hornification is loosened without rubbing & the pore contents are emulsified & flushed out. The skin's absorbency is enormously increased.

USE: Depending on individual skin type (dry - greasy) the entire contents of 1-3 pump strokes are used per treatment. Apply to dry skin, massage in using fingertips or a cleansing brush in circular motions & leave for 1 minute on the skin. Then emulsify upwards with moistened fingertips. The liquid now begins to foam, to a larger or greater extent, depending on the individual skin type. Then rinse thoroughly with lots of water. Combination with steam intensifies the cleansing result. Tip: also ideally suited as preparation for sugaring hair removal. Reduces ingrowth of hair.

KEY INGREDIENTS: Lamepon, papaya enzyme.
50ml **17213**



Hyaluron Lip Balm

Plumping Lip Serum

Nourishing hyaluron lip care with volumizing effect. Lip care that refreshes by moisturizing & noticeably soothing dry, stressed lips. Fine lip lines are visibly reduced thanks to high-quality peptides. Mint oil makes the lips appear fuller & more nourished. Kiss Me Quick blossom extract is bursting with minerals, antioxidants & vitamins to intensively protect & nourish the lips.

USE: Apply evenly to the lips as often as desired. Especially recommended for prolonged exposure to cold, wind or heat. Tip: Use before applying your lipstick for perfectly nourished, full lips.

KEY INGREDIENTS: Jojoba oil, Shea butter, Hyaluron, Peptides, Kiss Me Quick blossom extract (Portulaca pilosa extract), Mint oil.
10ml **18646**



Creams

Concentrated care for every skin type & need. Environmental hazards, stress, UV rays, cold & heat all have a negative impact on our skin. Thanks to their high level of effectiveness, these day-time & night-time creams provide the ideal balance to these daily stresses. Lightweight & rich textures leave skin feeling & looking its best.

Vitamin C

Anti-aging & whitening effect. Nourishing anti-aging cream with a whitening effect achieved through reduction of hyperpigmentation, such as age spots & freckles. The skin's elasticity is improved & is evenly lightened, alleviating existing pigmentation marks. Vitamin C nourishes, protects & regenerates the skin, plumping up the skin from the inside. It also firms & smooths fine lines, & functions as an antioxidant to protect skin from free radicals. Niacinamide (B3), mulberry & camellia strengthen the whitening effect & target moisture loss, lifting contours on the face in the process. **USE:** Apply to cleansed skin in the morning & evening, gently massaging into the skin. **KEY INGREDIENTS:** Vitamin C, mulberry extract, niacinamide (Vitamin B3), shea butter, camellia extract.

100ml
16816



Collagen

Skin firming & regenerating collagen cream. Hydrating marine skin care with collagen & algae extracts. Healthy & youthful skin needs ample collagen & a high water content. This collagen cream is a moisturizing ocean-based cream with marine collagen & algae extracts for effective anti-aging. These ingredients plump up the skin from the inside, supplying it with nourishing active substances. Marine sea lettuce & sea fennel protect the skin & provide it with a direct supply of moisture & nutrients. **USE:** Apply to cleansed skin in the morning & evening & gently massage into skin. **KEY INGREDIENTS:** Marine collagen, sea fennel extract, sea lettuce extract.

100ml
16817



Clear & Pure

Pore-refining cream with micro-silver. A 24-hour cream for blemished & oily skin. Gentle, yet effective weapon against pimples & breakouts. This lightweight & non-oily cream is ideal daily skin care for mixed & oily skin with blemishes. Mattifying clay reduces excess sebum buildup by reducing sebum glands. Bark extract from the yellow moambe cleanses, clarifies & helps to reduce inflammation. Micro-silver & tropical reed are highly antibacterial, soothing the skin & refining the pores. Seawater maintains optimum hydration levels. Sweet almond oil lastingly nourishes the skin. **USE:** Apply in the morning & evening. Make-up can be worn during the day.

KEY INGREDIENTS: Yellow moambe extract, tropical reed, poria mushroom, brown algae, freshwater algae, silver, salicylic acid.
100ml
16813



Anti-Aging Night

Regenerating & firming retinol night cream for renewed skin in the morning. Avocado oil, almond oil, shea butter & sunflower oil nourish the skin & increase its elasticity. Vitamin A promotes natural keratin synthesis in the skin, making it firmer & plumper. Skin is protected against premature aging & harmful environmental exposures. Ceramides in the cream form a protective film on the skin, preventing moisture loss, making it more resilient & strengthening the natural lipid barrier. Initial signs of skin aging are alleviated, & its progression slowed. Skin appears plumper, smoother & more even. Antioxidants from green tea extract protect & strengthen the skin's natural immune system. Impurities & irritations are soothed.

USE: Apply a film of cream on face & neck at night before sleeping. Leave on face to let cream work overnight for maximum benefits. **KEY INGREDIENTS:** Avocado oil, almond oil, shea butter, sunflower oil, green tea extract.

100ml
18281



Sensitive Plus

SOS Effect & Cell Protection Complex

Rich, intensive care for demanding, sensitive skin. Soothes sensitive & stressed skin with an extra dose of the highest quality active substances & makes the skin more robust against potential everyday irritants. Cellular protection of sensitive skin is strengthened, the skin is nourished with beneficial oils, & its moisture balance perfectly regulated. Together with prebiotic compounds, the anti-inflammatory active ingredient complex made with aloe vera, tiger grass, ectoin, squalane & alpha bisabolol brings the skin into healthy balance. Acute redness & skin irritation can be effectively reduced.

USE: Apply daily in the mornings & evenings. Can be applied 2-3 times per week or as an intensive treatment for 5 days per month. **KEY INGREDIENTS:** Ectoin, squalane, almond oil, shea butter, alpha bisabolol, aloe vera, prebiotic mechanism based on Lactobacillus ferment lysate, tiger grass extract, panthenol.

100ml
18968



Anti-Aging Eye Cream

Nourishing anti-wrinkle eye cream for noticeably & visibly smoother skin around the eyes. Antioxidant ingredients protect against premature skin aging, support regeneration of the skin, & ensure a vibrant, youthful appearance. Age spots, fine lines & damaged skin cells are lastingly & effectively combated. The intensively nourishing, vegan formula supplies the skin with optimal moisture. Experience velvety-smooth skin, visibly reduced mimic lines & soothed, moisturized skin around the eye area.

15ml
19661



Cream Imperia

Stem Cell Formula, Anti-Ageing Effect

Offers an entirely new combination of regenerative elements & highly concentrated extracts from alpine rose. Formulated with a melting point similar to skin temperature, this cream essentially becomes one with the skin. This special feature enables the active ingredients in the cream to penetrate the skin especially quickly, activating the skin's naturally regenerative abilities & making skin care a true pleasure. Fine lines & wrinkles are plumped up from the inside. Facial contours instantly appear firmer. Bio-active stem cells from alpine rose provide intensive protection & lengthen the cellular lifecycle. Skin is left soft & radiates youthful freshness. **USE:** Apply in the morning & evening after cleansing & gently massage into the skin. **KEY INGREDIENTS:** Stem cell extract from alpine rose, rose oil, jojoba oil, apricot oil & green tea.

100ml
15711

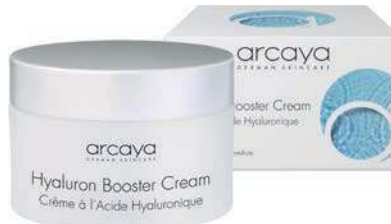


Hyaluron Booster

Moisture Flash Formula, Anti-Wrinkle Cream

This velvety-soft cream combats the primary signs of skin aging: structure, elasticity, firmness, fine lines & purity. The triple hyaluronic acid intensively moisturizes the skin, plumping & firming it. Prickly pear provides a strong dose of moisture & facilitates the skin's natural ability to regenerate itself. Sweet almond oil nourishes the skin, leaving it extremely soft & velvety. **USE:** Apply to the skin in the morning & evening & gently massage in. **KEY INGREDIENTS:** High & low molecular weight hyaluron as well as cross-linked hyaluron, prickly pear extract, almond oil.

100ml
15712



Masks - 100ml

"Overnight Repair - Radiantly Beautiful Skin Smooth Skin Formula"

Creamy, luxurious anti-wrinkle face mask for smooth skin in the morning. For amazingly soft, vital, youthful & well-moisturized skin. Works during the deep sleep phase. Has a pleasantly nourishing & cooling feel on the skin. Premium squalane, innovative peptides & beneficial oils effectively address visible signs of skin aging such as fine lines & loss of elasticity & firmness. Skin is supplied with moisture & nutrients overnight. Black tea extract alleviates redness & infection. Tannins in the black tea extract visibly reduce dark rings under the eyes. Suited for combination skin & skin prone to blemishes. **USE:** Apply mask to cleansed skin in the evenings. Allow to sit overnight. Remove any residue from the mask in the morning. Cleanse & apply a daytime moisturizer afterwards. **KEY INGREDIENTS:** Almond oil, Squalane, Black tea extract (tannin), Peptides, Biotin.

18645



Hyaluron - Flash Beauty Effect Deep Moisture Formula

Skin feels delightfully fresh as soon as the mask is applied. Low molecular weight, highly active hyaluron has an intensive impact on the skin, quickly filling in wrinkles to smooth out fine lines. Prickly pear extract replenishes the skin's natural moisture reservoir & instantly leaves the skin feeling fresh & looking smooth & fine-pored. **USE:** Apply a thin layer, including the skin around the eye area. Remove with wet cloth or water after 10 minutes. **KEY INGREDIENTS:** Low-molecular, high active hyaluron, prickly pear extract.

15713



White Earth - Detox Formula Deep Cleansing Effect

Curative mask that also relaxes the skin. Minerals & white China clay cleanse the skin & leave it with a matte finish. Deep cleansing, pore-refining mask with natural China clay. The curative effects of this mask become apparent as soon as it is applied. The skin immediately feels relaxed & calm. Like blotting paper, the mask absorbs any superfluous lipids & deep cleans the skin. Deposits & excess skin cells are removed; blotches & irregularities are evened out. The complexion radiates youthful purity as soon as the mask is washed off. The skin feels refreshed & has a fine-pored, matte finish that lasts for hours. **USE:** Apply mask generously, avoiding the area around the eyes. Remove the mask when it begins to dry. Massage the mask with damp fingertips & then wipe off with damp cloths. **KEY INGREDIENTS:** China clay, argan oil.

15714



Baobab - Vitamin Formula Best Nourishing Effect

Take your skin from dry to silky-smooth in just minutes! Leaves your skin dewy-fresh & smooth in no time at all. Nourishing vitamin-rich conditioning mask with traditional baobab oil that restores dry skin to its natural moisture balance while also soothing & regenerating. Ideal for especially dry, mature skin with low moisture levels or skin that can no longer function properly as a barrier. Cellular renewal processes are effectively supported & the elasticity of the skin improved. The protective, moisturizing effects of the mask can be felt as soon as it is applied. **USE:** Apply a film, covering the area around the eyes as well. Remove with a damp wash mitt or cosmetic cloths after 10 to 12 minutes. Tip: Also ideally suited for a brief massage before removal of residue. **KEY INGREDIENTS:** Baobab oil, sweet almond oil.

15716



Green Tea - Youth Formula Best Energy Effect

Instant beauty mask for demanding skin. Green tea extract balances, relaxes & immediately smooths the skin. Leaves skin extra-supple & smooth. The soft, creamy formula refreshes & revitalizes both the skin & the senses. Exceptionally nourishing for mature, demanding skin, this mask protects it from wrinkle formation & light-induced aging. The regenerative effect is further enhanced by Coenzyme Q10. Instantly feel your skin recovering, becoming more robust & smoother during the treatment. **USE:** Apply the mask to the face, neck & décolleté (including eye zone & lips). Let the mask absorb well. After 10 minutes, remove with a damp cloth. **KEY INGREDIENTS:** Green tea extract, coenzyme Q10, grape seed oil.

15715



Gray Silver Mask - Anti-Pollution Formula Pure Skin Effect

Special detoxing mask for impurities & skin damaged by environmental influences. This gentle but highly effective gel mask conditions the skin with a powerful active ingredient combination of bamboo, activated charcoal & silver. Activated charcoal acts like a magnet for dirt particles, meaning it cleanses the skin especially well. This is ideal for skin negatively affected by the environment. Acne is reduced, the complexion is matted & formation of new sebum is significantly slowed. Skin with a tendency to break out is lastingly soothed. Silver has an antibacterial effect & can prevent new impurities from forming. **USE:** Apply a thin film, leaving out the area around the eyes. Remove with a damp wash mitt or cosmetic cloths after 10 to 12 minutes. **KEY INGREDIENTS:** Bamboo, active charcoal, silver.

15717



screenage line

screenage is the combination of screen + age. In our modern world, UV & blue ray radiation & environmental pollution are primary causes for ageing of the skin. The arcaya screenage line has two effects: combats skin ageing & blemishes at the same time, while protecting against harmful environmental influences such as pollution. This range has been developed for both in-salon treatments as well as home care.

- Blue light protection - "Screen Radiation"
- UV protection
- Protection from environmental pollution from gases of all kinds
- 24 hour moisture
- Regenerating & whitening Edelweiss stem cell extract with anti-blemish effect

screenage Repair Actives Ampoules (5 x 2ml)

Blue light & pollution blocker. Intensively smoothing ampoule serum for a perfect complexion. Protects DNA & blocks UV rays, blue light & particulate pollution.

Edelweiss stem cells with extremely high skin regeneration potential are also powerful antioxidants that neutralize free radicals & protect DNA. Stress on the skin is eliminated & impurities are significantly reduced. **USE:** Apply the content of one ampoule in the morning or evening after cleansing & gently massage into the skin, then apply moisturizer or cream. **KEY INGREDIENTS:** Edelweiss stem cell extract, moringa seed extract, butterfly bush flower extract, triple hyaluron.

15599



screenage Repair Serum

Blue light & pollution blocker with edelweiss stem cells. Regenerating serum with fine dust, UV & blue light protection. Provides protection against environmental pollution, UV rays & blue light.

Combats fine lines & ensures an even complexion. Instant smoothing effect that can be both seen & felt. **USE:** Apply a sufficient amount in the morning & evening after cleansing & gently massage into the skin to distribute. If needed, use a serum first. **KEY INGREDIENTS:** Edelweiss stem cell extract, moringa seed extract, butterfly bush flower extract, almond oil, sunflower oil, triple hyaluron.

15597



screenage Repair Cream

Blue light & pollution-blocking 24-hour cream. Contains edelweiss stem cells with high skin rejuvenation potential, which are also powerful antioxidants that neutralize free radicals & protect DNA. Stress on the skin is eliminated. Shields the skin against particulate pollution & other harmful environmental toxins. Impurities are significantly alleviated. **KEY INGREDIENTS:** Edelweiss stem cell extract, moringa seed extract, butterfly bush flower extract, almond oil, sunflower oil, triple hyaluron.

16001



Serums - 30ml

arcaya serums are masterpieces of modern cosmetics, harnessing the latest scientific findings to improve the skin's natural beauty. The unique combination of natural & medical ingredients makes it possible to achieve especially intensive skin care results. Ideal for use in the beauty salon when specific skin types & issues need to be treated. Ideal for use in the beauty salon for intensified results with treatment equipment. Also ideal for home care for targeted & optimal skin treatment.

Vitamin C

For perfecting & smoothing skin texture & appearance.

This special anti-aging serum leaves the skin looking a little fresher, smoother & more even each day. It protects the skin against harmful environmental influences, moisturizes, evens out skin tone & can reduce the appearance of fine lines & pigmentation marks.

The skin's natural collagen synthesis process is stimulated, moisture reserves replenished & the skin gently nourished. Vitamin C provides a whitening effect, promotes collagen synthesis & works as an antioxidant.

USE: Apply several drops to the face, neck & décolleté & gently pat in.

KEY INGREDIENTS: Vitamin C, salicylic acid, goji berry extract & Irish moss.

18337



Sea Collagen

Refreshing collagen serum with beneficial ingredients from the sea.

A refreshing anti-aging serum that smooths & hydrates. The skin looks plumper, firmer & younger. Algae extracts, marine collagen & mineral-rich sea water supply the skin with moisture, vitamins & minerals.

The skin's natural collagen & mineral reserves are replenished. Signs of premature skin aging are significantly reduced through stimulation of the body's own collagen synthesis & an extra dose of marine collagen. The result is smoother, younger-looking skin.

USE: Apply several drops to the face, neck & décolleté, then gently pat in. Extended treatment for at least one skin cycle (approximately 28 days) is recommended.

KEY INGREDIENTS: Marine collagen, sea lettuce & plankton

18338



SOS Eye Gel

Goodbye tired, puffy eyes & under eye rings! arcaya SOS Eye Gel supplies the sensitive skin around the eye with intensive moisture & the finest active ingredients for instantly visible results. The aescin contained in chestnut extract reduces puffiness & dark eye rings by stimulating microcirculation in the skin.

The eye area looks fresher, more vital & more youthful. SOS Eye Gel makes eyes shine, giving them a refreshed & revitalized appearance.

15ml
19662



Matt & Pure Balancing Pore Refiner Serum

Concentrate with mastic to treat shiny skin. The perfect skin care serum for large pores, irregularities & oily skin. Makes large pores almost invisible, mattes shiny skin, has an antimicrobial effect & prevents blackheads & irregularities. Always leaves the complexion clear & refined. **USE:** Apply a few drops to the skin in the morning & evening & gently massage in. Ideal as a foundation for make-up. **KEY INGREDIENTS:** Mastic (serum from the pistachio tree), narrowleaf plantain extract, mahonia extract.

15354



Gent's Care

A specialized range of products formulated for men. Even though more men are continuing to care for their skin, many are yet to be introduced to a brand perfectly suited for them. Gent's Care is focused on simplifying skin care for men's needs, products that are easy to understand & use, & offer real-world benefits that men recognize & value.

Recharge Ampoules (5 x 2ml)

Anti-Hangover Effect

Greatly diminishes signs of late night escapades on the face. The morning after, skin is typically looking & feeling dry, & craves hydration. Recharge is a moisturizing, refreshing & smoothing ampoule concentrate with anti-hangover & relaxation effect.

KEY INGREDIENTS: Whiskey extract - enzymatic effect
Aloe Vera juice, Cucumber Juice - refreshes skin,
Caffeine, Taurine - leaves skin dewy fresh, Irish moss - moisturizes & soothes,
Hyaluronic Acid, Sea Mayweed - protects & soothes the skin, making it less prone to redness

18578



Rescue Anti Puffiness Eye Serum

Developed for the skin around swollen, tired eyes. The sensitive & dry eye area is refreshed & soothingly nourished. Bags under the eyes, dark eye circles & tired-looking skin is noticeably improved & rejuvenated.

Highly active, plant-based ingredient complexes to instantly cool & soothe dry, stressed skin. Irritations & puffiness around the eye area are alleviated.

15ml
18579



Relax Calming Effect After Shave Balm

Specially formulated to be as mild as possible, this balm calms stressed skin with a thoroughly researched set of key ingredients.

Irritation, tightness & redness are soothed, lipids are replaced, & the skin is returned to its normal, healthy state. Cuts inflicted on the skin by the razor are soothed, prepping the skin for fast healing. Thanks to menthol & cucumber, a cooling & relaxing sensation is felt on the skin.

30ml
18580



Reyouth Hydrating & Firming Effect Face Cream

Men's skin differs from women's skin in terms of structure & function. It is thicker & produces more sebum, & thus needs a specialized face cream formula to ensure a healthy moisture & oil balance.

Thanks to inventive key ingredients, Reyouth cream is nourishing & refreshing. Once it is worked into the skin, there is no visible trace of cream on the face. All that is left behind is the fresh herbal scent.

50ml
18581



Revive Peel-Off Mask

The perfect wake-up call for tired, stressed men. Revives & balances the skin, restoring its natural resilience. Apply a thin, even layer of the mask to the face & neck & let dry. Leave out the eye area. When done, gently rub the creamy film of the mask in one spot & pull up. Then slowly peel off the entire mask. This mask is also suitable for men with beards. Simply leave the beard out.

The cooling "burning ice" effect of Caffeine & Irish moss instantly invigorates. Cucumber extract & aloe vera provide soothing relief, supplying dry skin with intensive moisture. Red patches & fine lines are visibly reduced. The refreshing cell stimulation from guarana extract lasts for hours, rounding off the powerful instant effect of the beneficial active ingredients.

All excess dead skin cells are removed when the mask is peeled off. The skin is once again pleasantly smooth & feels wonderfully fresh.
19666



Special Collections

Glam Edition, 7 Ampoules x 2ml

- Hyaluronic Plus x 3
- Platinum x 1
- Golden Repair x 1
- Eye Repair x 1
- Viper x 1

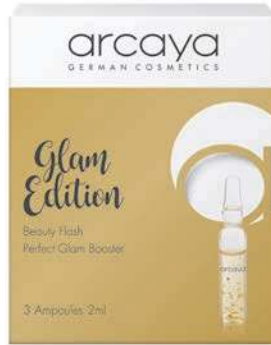
14736



Glam Edition Mini, 3 Ampoules x 2ml

- Hyaluronic Plus x 1
- Platinum x 1
- Golden Repair x 1

14737



Christmas Calendar, 24 Ampoules x 2ml

- Hyaluronic Plus x 4
- Best Caviar x 4
- Multi Vitamin x 4
- Aloe Vera x 4
- Beauty Sleep x 4
- Beauty Day x 4

14738



Hydro Edition - Fight dehydration on all fronts

Hyaluron Plus | Energy Active | Oxygen - (3 x 2ml)

Valentine's Day, International Women's day, Easter, Mother's Day - lots of opportunities to give others (or yourself).

15022



Beauty Selection, 3 x 2ml Ampoules

In a 3-piece promotional box including:

- **Beauty Express:** super high-impact ampoule for tired & pale-looking skin, for fine lines & for sun wrinkles.
- **Beauty Day:** for a radiant & perfect experience & fresh-looking skin.
- **Beauty Sleep:** concentrated formula for night-time use for smooth, relaxed skin in the morning.

15023



Day & Night Edition, 10 x 2ml Ampoules

Ampoules treatment for day & night.

Includes:

- 5 x Beauty Day: for radiant, healthy, fresh-looking skin.
- 5 x Beauty Sleep: concentrated formula for night-time use for smooth, relaxed skin in the morning.

18300



Pink Edition, 5 Ampoules x 2ml, 12 Piece Display

Breast Cancer Awareness collection of ampoules that focus on anti-aging, hydration & plumping of the skin.

Includes:

- 2 x Stem Cell Actives - lengthens cellular lifecycle to treat wrinkles & fine lines.
- 2 x Elastin Age Stop - improves skin elasticity so skin does not feel tight & dry.
- 1 x Volume Lips - plumps lips for better volume & suppleness.

16318



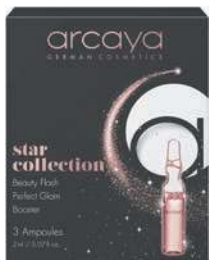
Star Collection - A combination of arcaya's famous beauty star ampoules.

Mini
3 x 2ml Ampoules

Includes:

- 1 x Hyaluron Plus
- 1 x Golden Repair
- 1 x Collagen Plus

16319



12 Piece Display

Includes:

- 12 x 7 Piece Standard Boxes
- 1 x Brand Display
- 1 x Poster

16321



Hydro Performance Set, 10 x 2ml Ampoules

A 10-day treatment that ensures radiance & moisture for every skin.

Includes:

- 5 x 2ml Hyaluron Plus for a moisturizing & wrinkle refill effect.
- 5 x 2ml Crystal for an anti-aging & firming effect.

18615



Hydro Perfect Set, 3 x 2ml Ampoules

A mini pack for instant moisture, freshness & relief

Includes:

- 1 x Hyaluron Plus
- 1 x Energy Active
- 1 x ResQ10

18687



Peel Off Mask

Cleans away dead cells, blackheads, dirt & oil on the face. Rejuvenates the skin thanks to herbal active ingredients, leaving a refreshing look & feel. 150ml



Black
Detoxifying activated carbon
17605



Gold
Radiant skin restoration
17606

Facial Scrub Gel

Natural extracts renew the surface skin layer using gentle exfoliation, revitalizing it without irritation. Cleans pores & removes impurities. Skin is left radiant, fresh & smooth, all without any dryness. 350ml



Apricot
17926



Strawberry
17927

3-in-1 Skin Mask

Triple mineral action with salicylic acid & menthol crystals. Purifies, unclogs pores & mattifies the skin. 350ml
17928



IROHA NATURE - MADE IN KOREA



An intensive, practical & natural cosmetic, with results in only 15 minutes. The combination of tissue & serum provides a professional, intensive & highly effective treatment.

Eye & Lip Anti-Fatigue Vitamin C Hydrogel Patches, 6 per pack Paraben-free formula that reduces inflammation & restores vibrancy & color to the skin under the eyes. **12337**



100% Cotton Face & Neck Mask - Regenerating Argan Oil + Hyaluronic Acid Single use face mask infused with 30ml of specialized serum. 15 minute intensive treatment. Paraben-free, natural ingredients. **12327**



Creamy Masks - Multi-dose sachets with closing cap. 98% natural ingredients & paraben-free. 25g

Apricot Cleansing Soft Scrub Gel
14 uses
12332



Chocolate Moisturizing Creamy Mask
5 uses
12334



Coconut Comforting Smoothing Creamy Mask
5 uses
12336



Honey Nourishing Creamy Mask
5 uses
12331



TERRACTIVE - paraben-free, phenoxyethanol-free, at least 98% of ingredients are of natural origin

Pamper yourself with an exceptional beauty ritual made with rare ingredients, sourced from exotic areas around the globe. The TERRACTIVE range with highly active properties & soft, smooth textures, combines natural ingredients that take care of both your skin & the environment.

Moisturising Day Cream Zanzibar (8 applications) Zanzibar cream. Shea butter & cocoa butter, this cream is perfect for making even the driest skin silky & smooth. 16g
10281



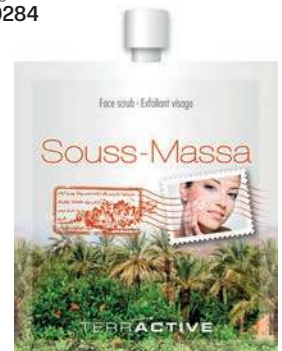
Moisturising Day Cream Sibir (8 applications) Siberian cream. A gentle, cooling day cream which has a notable antioxidant. The combination of pine oil with ginseng root soothes skin. 16g
10282



Face Scrub Koulikoro (8 applications) Malian massage honey. A luxurious exfoliant, both spicy & sweet, has shea nuts originating from the savannahs of West Africa, refines & polishes the skin. 16g
10283



Face Scrub Souss-Massa (8 applications) South Moroccan orange scrub. A facial scrub which immerses you in the sweet succulence of the Moroccan palm groves. Bursting with vitamin A & C, tones skin & gently removes dead cells. 16g
10284



Galvanic Desincrustation Gel

Luxurious formula that can be used on both positive (+) & negative (-) settings during facial galvanic, as an advanced gel during luxury facial treatments or at the end of a massage.

500ml
12522



Masques

Professional Facial Masques suitable for all skin types, provides an additional level of client skin care. Each Masque has been designed to produce specific benefits for the skin.

30g

Anti-Aging Peel Off Masque
12514



Anti-Acne Peel Off Masque
12515



Brightening Peel Off Masque
12516



Firming Peel Off Masque
12517



Ampoules

Intense skin treatment for use during luxury facials. The range provides a selection of benefits for various skin types.

Caviar Ampoules

Highly moisturizing, Caviar is ideally suited for sallow, stressed, tired skin. Its natural, revitalizing properties help the skin to regain its natural suppleness & radiance.

2ml x 10
12523



Vitamin C Ampoules

A light, easily-absorbed formula providing an intensive, brightening & revitalizing treatment to skin during luxury facial treatments.

3ml x 10
12525



Brow Waxing Kit

Wax with confidence. Provides salon & brow bar owners the perfect opportunity to increase their customer offering. This compact & complete "all-in-one" business solution is essential for every brow station or treatment room.

Includes:

- 1 x Petite Compact 200cc Wax Heater
- 2 x 50g Sensitive Hot Film Wax Discs
- 1 x Pre-wax Cleansing Lotion, 200ml
- 1 x After Wax Treatment Lotion, 200ml
- 50 x mini disposable wooden spatulas
- 1 x pair of angled tweezers

12507



Prescriptive Facials

A range of specialist powders & tonics, essential for the mixing of prescriptive face masks.

Calamine Powder

A pure mineral powder designed for use with mask tonics to soothe & calm dry/sensitive skin.

500g
12511



Fine Oatmeal

To naturally calm combination/oily skin, known for its anti-irritant & anti-inflammatory properties.

500g
12512



Masking Kit

Ideal for salons or students looking to offer mask treatments to clients.

Includes:

- 1 x Magnesium Carbonate, 25g
- 1 x Fullers Earth, 75g
- 1 x Kaolin Powder, 75g
- 1 x Calamine Powder, 75g
- 1 x Rose Water, 150ml
- 1 x Witch Hazel, 150ml
- 1 x Mask Brush
- 2 x Mask Removing Sponges
- 1 x 4" Bowl

12513



Face & Body Frangipani

A range of indulgent products with key ingredients of fragrant Frangipani & moisturizing Monoi Oil to nourish the skin.

Indulgent Body Cream

An exotic, light & rich cream to hydrate & nourish all skin types.

500ml
12526



Sugar & Oil Body Scrub

A luxurious salt & oil scrub that uses a unique blend of sugar & oil to leave all skin types feeling smooth & supple.

500ml
12527



A large range of ON-THE-GO cosmetic treatment products. Made in France with their high standards & fast results, the products are small, effective, easy to carry & use any time, day or night. This cosmetic brand is the answer to women's cosmetic problems with active, specific solutions. Easy to use, easy to understand. ACTIVE BEAUTY.

Fair Complexion Face Mask
Illuminates & tones, contains essential oils of carrot & cypress to illuminate complexion.
15g
7617



Detoxifying Face Mask
Anti-pollution, eliminates toxins & brings luminance back to a dull complexion.
15g
7620



Clear Skin Face Mask
Cleanses & purifies, contains lavender to repair & calm. Ideal for greasy skin.
15g
7618



Refining & Exfoliating Face Mask
Soothes & refines, contains essential oils to repair, stimulate & tone.
15g
7622



Pore Minimizer Face Mask
Reduces skin pores & mattifies, contains fruit extracts to exfoliate dead cells & unclog skin pores.
15g
7625



Semi-Permanent Touch-Up
Gives eyelashes & eyebrows a natural, dense color. Water-resistant. Little by little brows & lashes adopt the dye color.
6ml
Black
7646



Eye Bag Minimizer
Conceals tired eyes & bags under eyes.
20ml
7638



CONVENIENT SOLUTIONS

Cucumber Purifying Spa Mask
Aloe Vera/Ginseng/Papaya, soothing, revitalizing & moisturizing. Balances the skin's moisture content, soothing & cleansing.
7635



Grape Seed Anti-Aging Spa Mask
Green tea/Marine collagen. Effective against free radicals, practical, fast & effective, this mask rejuvenates the skin.
7636



Tea Tree Nose Pore Strips
Unclogs, deep cleanses the pores on the nose.
5 per pack
7634



Charcoal Sebum Patches
Unclogs, absorbs excess sebum.
5 per pack
7631



Puffy Eye Reducer Pads
Aloe Vera & chamomile, drains & revitalizes the contours of the eye.
9g (8 sets)
7633



Toning Chamomile & Fig Eye Relief Stick

For reviving tired eyes. Enriched with fig extract, this refreshing stick soothes, tones & relaxes tired eye contours. Contains chamomile, renowned for its decongestant properties, produces brighter, relaxed eyes. Ideal for those days after long, sleepless nights.

4g
16753

**Restoring Retinol Lip Balm**

Nourishing formula to treat cracked, damaged lips. Regenerates & moisturizes lips, restoring natural softness. Retinol content is released via micro-encapsulation to protect lips from the environment & reduce the signs of aging. Naturally reacts to the pH of your lips, leaving a rosy tint for a natural color boost.

12ml
16756

**Overnight Hemp Lip Balm**

The solution for dry, cracked lips. Features hemp & peppermint oils to soften & stimulate the lips for a fresh feeling. An overnight formula that works as you sleep. When you wake up, lips are feeling supple, plump & fully repaired.

10ml
16758

**Purifying Tea Tree Lotion**

Active ingredients of tea tree effectively treat imperfections on the skin. This 2-in-1 lotion works to protect the skin for the future & offers a mattifying effect. Ideal for problem skin.

10ml
16759

**Dark Spots Lightening Gel**

Brightening serum that works to diminish signs of age spots. Active ingredients, including liquorice extract, have a depigmenting effect on age spots, reducing visibility after just three weeks. Dermatologically tested & offers proven visible results after a minimum of 3 weeks of use, with maximum results achieved after 12 weeks.

10ml
16760

**Scars & Blemishes Seed Oil**

Specialist oil for scars & pigmentation. Contains Rosa Mosqueta oil, a powerful moisturizing ingredient that boosts cellular renewal to treat scars & marks. Rich in fatty acids to restore the skin's texture & reduce the appearance of blemishes, particularly those caused by skin problems such as acne.

10ml
16761

**SPA MASKS****Detoxifying Bamboo**

Innovative bamboo charcoal extract rebalances combination to oily skin. Tightens pores & improves skin elasticity for a smooth finish.

16745

**Soothing Aloe Vera Hydrating**

Soothes the skin with Aloe Vera leaf. Rich in calming active plants such as firewood & purslane nourish the skin & allows it to regain its elasticity.

16746

**STICK MASKS****Zinc & Clay Zero Pores**

Cleanses excess sebum & impurities from the surface of the skin for a mattifying effect. Skin pores are tightened for a smooth finish. Zinc rebalances & purifies the skin, while green clay eliminates impurities.

30g
16747

**Hemp & Clay Hydra Boost**

Invigorates the skin as it imparts an intense freshness. White clay softens, soothes & purifies the skin, while hemp soothes irritations & improves elasticity & hydration.

30g
16748

**Sugarcane & Clay Glow Reviver**

Instantly reveals natural radiance of the skin while giving it intense freshness. Skin complexion is refreshed as it reveals the skin's natural radiance. Pink clay removes impurities & restores balance, while sugarcane stimulates cellular renewal.

30g
16749



Advanced Facial Sheet Masks, 1 Sheet

Pamper yourself with nourishing, plant-based botanicals packed with key vitamins & nutrients. These sheet masks give your skin a renewed, refreshed glow.

Calming

- Calming Facial Sheet Mask with Tea Tree.
- Soothes & softens skin.

15386



Brightening

- Brightening Facial Sheet Mask with Vitamin C.
- Nourishes & evens skin tone.

15387



Revitalizing

- Revitalizing Facial Sheet Mask with Anti-Aging Peptides.
- Firms & restores skin.

15389



Premium Gold Hydrogel Mask, 1 Sheet

- Lifting, Firming, Glowing
- Ready to use
- Made in Korea

14986



Rose Gold Hydrogel Mask, 1 Sheet

- Luminating, Toning, Lifting
- Ready to use
- Made in Korea

14987



Charcoal Gold Hydrogel Mask, 1 Sheet

- Purifying, Brightening, Detoxifying
- Ready to use
- Made in Korea

14988



Pure Radiance Charcoal Mask, 1 Sheet

13968



Charcoal Modeling Mask

- Gel & Powder, 2 step Mix & Mask.
- Unclogs pores & removes toxins.
- Activated charcoal helps eliminate bacteria & dirt from the skin, leaving you with a more flawless complexion.
- Made in Korea.

14991



Gold Modeling Mask

- Gel & Powder, 2 step Mix & Mask.
- Brightening & Firming, slows down collagen depletion, brightens skin complexion & stimulates cells, leaving skin firm & glowing.
- Made in Korea.

14992



Hydrogel Under Eye Patch - 60 pieces per jar

- Coral & Aqua
- Moisture-rich formula purifies & deeply hydrates the eye area.

15402



Facial Cleansing Tissues, 60 Sheets

Pre-moistened tissues (15 x 20cm). Enriched with Vitamin E, these tissues cleanse & refresh the skin. Ideal for removing impurities & make-up from the face.



Vitamin C
17748



Micellar Water
17749



Cucumber
17750



Aloe Vera
17751

Nose Pore Strips, 6 pieces

- Formulated with Charcoal & Witch Hazel Extract.
- Detoxifying & deep cleansing.
- Unclogs pores & helps to remove blackheads & impurities.



Charcoal
17766



Men's Charcoal
17746



Retinol
17752



Rose Water
17753

Facial Masks, 1 Sheet

Ultimate facial skin therapy with highly penetrative ingredients for maximum efficacy.



Aloe Vera
Soothing - calming & hydrating - rosemary, tea tree & sage leaf extract
17758



Rosewater
Hydrating - toning & moisturizing - hibiscus & peony root extract
17759



Vitamin C
Brightening - smoothing & illuminating - lemon & orange fruit extract
17760



Cucumber
Cooling - moisturizing & refreshing - watermelon & apple fruit extract
17761

Hand & Foot Masks, 3 Pairs

Treat the skin to highly effective ingredients. One size fits all.

Nourishing Hand Mask

Moisturizing & pampering rough hands. Features key ingredients shea butter, grapefruit extract, jojoba seed oil & sunflower seed oil.

17762



Moisturizing Foot Mask

Softening & smoothing dry, cracked feet & heels. Features key ingredients shea butter, tea tree oil, witch hazel & aloe vera extract.

17763



Under Eye Gel Pads, 5 Pairs

Collagen & Peptide Complex
Nourishing & Smoothing - Helps to reduce fine lines, puffiness & the appearance of dark circles.

17764



Retinol & Hyaluronic Acid
Replenishing & Moisturizing - Helps to restore a smoother, youthful appearance.

17765



Miracle Care Kit

Luxurious, naturally-derived, ultra-moisturizing skin care products, with an array of exotic & luxurious fragrances to beautify the skin. Hemp Seed products have been formulated to deliver rich sensory experiences with lavish results. All products are 100% vegan & cruelty-free.

Contains:

- Hemp Seed Skin Butter, 237g (Guavalava scent)
- Miracle Oil, 30ml
- Hemp Seed Hand Wash, 237ml
- Hemp Seed 3-in-1 Massage Candle, 177ml (Guavalava scent)
- Hemp Seed Bath & Shower Gel, 237ml (Guavalava scent)

17509



Shower & Spa Gift Set

Contains selection of products with ISLE OF YOU fragrance:

Includes:

- Bath & Shower Gel, 237ml
- Hand & Body Lotion, 207ml
- Skin Butter, 227g

18104



Whip Skin Butter

Softens up hands, body & feet. With Argan Oil, Hemp Seed Oil & rich emollients, this intense moisturizer quickly absorbs to help with extreme dryness for soft, supple skin.

- Moisturizes & hydrates parched skin.
- Provides long-lasting softness to all skin types.
- Restores skin flexibility & elasticity.

255g

18238



DALON

dalon
care & beauty

Quality hair care at an affordable price. Cultivated & produced in Greece. Thorough research & development has created several ranges of problem-solving products for hair, face & body care. Only the highest quality raw materials are used in manufacturing, & continuous research of new ingredients, quality & innovation evolve with the hair care industry. All natural extracts are cultivated in Greece to maintain quality control & efficacy. All products are dermatologically tested to ensure maximum gentleness.

Prime Body Scrub

Delicate body scrub with granules for thorough exfoliation. Suitable for all skin types to use for a soft & smooth texture. 500ml



Sandalwood
Almond granules, perfumed with warm sandalwood & cedar.
18013



Vanilla
Almond granules, perfumed with sweet vanilla.
18014



Green Tea
Volcano perlite granules & green tea extract.
18015



Aloe Vera
Volcano perlite granules & aloe vera extract.
18016

Prime Body Cream Almond Yogurt

Light texture body cream enriched with aloe vera to soothe & moisturize skin. Wonderful perfume of almond milk. Easily absorbed & leaves skin feeling soft.

500ml

18017



Micellar Foam Face Cleanser

Soft, gentle foam cleanser for deep facial cleansing. Enriched with daisy flower & helichrysum extract for long-lasting hydration, anti-pollution effects, & improved skin radiance. Natural perfumes of lavender flower water.

150ml

18012



APRAISE

Apraise®

Micellar Eye Make-Up Remover
Remove make-up in one swipe. A soothing & gentle oil-free formula which thoroughly cleanses the eye area, leaving no residue.

Mild surfactant technology works to only remove dirt, debris & buildup.
500ml
16675



Cooling Aloe Vera Gel
Calms & soothes all skin types, leaving skin soft & moisturized. Perfect for after facial treatments when skin is sensitive or irritated, such as after tinting, facials, peels, waxing & lasers.

Ideal for puffiness, redness & irritations. Free of parabens & mineral oil.

500ml
16676

